



MUMBAI MOBILE CRECHES ANNUAL REPORT | 2022-2023



ANNUAL REPORT 2022–2023



Contents

• Executive Summary	03
• About MMC	05
• Vision	05
• Mission	05
• History	05
• Our Approach	06
• Our Reach	07
• Feedback	09
• Our Children	10
• Children Reached	10
• Age Distribution	10
• Migration	11
• Linguistic Diversity	12
• Profile of the Parents of Children	12
• Education	14
• Thematic approach to learning	15
• Digital education programme	15
• Beyond Academics	16
• Events	20
• Health & Nutrition	22
• Health	22
• Nutrition	28
• Community Outreach	33
• Interactions with the Community	33
• Facilitation of Resources for the Community	35
• Engaging the Youth and workers	38
• Training	39
• Bal Palika Training programme	39
• Bal Vikas Sahayog	42
• Our Partners	43
• Government	43
• Hospitals	43
• Builders & Contractors	44

• Organizational Development & Growth	45
• Building Networks and Alliances	45
• Institutional Strengthening Initiatives	46
• Building Capacities of Staff	47
• Governance	51
• Our Board	51
• Details of Board Meetings	51
• Financials	52
• Income & Expenditure Account	52
• Abridged Balance Sheet	53
• Receipts & Payments	54
• Auditors, Legal Advisor & Bankers	54
• Registrations	55
• Salaries & Benefits	56
• Volunteers	57
• Friends of MMC	57
• Supporters	58
• Donations: Individuals	60
• Donations & Earmarked Grants: Organizations, Trusts & Foundations	60
• Donations & Earmarked Grants: Corporates	60
• Donations in Kind	60
• Centres Operated	61
• MMC in Media	63

Photographs

- Front Cover – Mr. Naveen Umed Chaudhary
- Back Cover – Mr. Naveen Umed Chaudhary and Mumbai Mobile Creches

Executive Summary

Dear Friends,

Our day care centres were once again full of joy and giggles as we came back to working full swing. We gradually opened the centres for all children in a phase-wise manner to adhere to the COVID-19 pandemic guidelines. From November 2022, all children including those under a year started attending the centres.

As we bounced back to normal, we focused on expanding our programmes and reaching out to more children from other underprivileged communities.

During the financial year 2022-2023, we were able to reach 4027 children through various interventions. MMC ran 19 Day Care Centres on construction sites, 7 special projects (two slums and 5 brick kilns), 5 Child Care Centres, 4 Community Outreach Programmes and 8 Mobile Bus sites.

Last year, with the relentless efforts of our team, we were able to identify and start interventions on brick kilns that are operational throughout the year. We expanded day care centres to two new seasonal brick kilns.

Phirti Library and Toy Library programme enabled the children to carry their choice of books and toys home. Other activities like newspaper reading, Drop Everything And Read (DEAR), Read to Me were conducted as planned.

Our Tablet Based Learning initiative was further expanded to three centres, based on internal evaluation study that showed a positive impact on children's learning. We observed that it is supporting our older children to keep up with their school curriculum. Our children got a vast range of exposure through extracurricular activities like chess, ABACUS, and Life Skills Sessions. Last year, we also conducted internal evaluation study on Life Skills education. Based on the findings that showed a behavioural change among the children, we will be introducing Life Skills education across all centres.

The excitement amongst children and the teachers went through the roof as after a gap of two years, they went on Annual Camps. This was the first time that children from Brick Kiln sites got to attend an Annual Camp. It was an out of the world experience for them as they seldom get to leave the brick kiln sites.

Last year, the children had an extra pep in their feet as we were able to celebrate all the special events at the centres. We celebrated Khel Mahotsav in May 2022 with new and innovative games, Annual Book Week in November 2022, Annual Puppet Week in January 2023 and Health Week in March 2023.

To safeguard the dietary needs of our children, we distributed supplementary nutrition to all children at the centres. Initially, parents of crèche children were called to the centres to collect the meals. November onwards, crèche children started receiving all meals at the centres. We also distributed seasonal fruits and lime water during summer months.

Through our Health Programmes, we witnessed the health of several malnourished children improving.

We also screened 1372 children and 1381 children on an average through eye and ear camps respectively. We also started screening children for dental ailments through dental health check up camps, 866 children were screened.

We continued to train child caregivers in Early Childhood Care and Education through our flagship Bal Palika Teacher Training Programme at both our training centres. Last year, 26 women were trained under the programme out of which 10 were from the construction sites itself. 18 trainees from the academic batch YR 2021-2022 were placed at MMC centres and other institutions/ NGOs after the completion of their course.

The trainees from the batch of Academic Year 2022-2023 for the first time got a unique exposure of conducting a Teaching Aids Exhibition at Schindler India Pvt. Ltd.'s office along with the regular Annual Teaching Aids Exhibition of MMC. Trainees were exposed to the corporate world as well as got an opportunity to interact with the new set of spectators.

We started conducting youth meetings with the alumni in the age group of 14 to 18 years again to disseminate information about several government schemes, benefits etc. We conducted 23 youth meetings where 754 children participated. As a part of strengthening our relationship with the alumni in the age group 18 years and above, we conducted an Annual Alumni Camp and observed participation of over 50 alumni. This was the first alumni camp after the pandemic.

Our engagement with the community of migrant workers continued with the motivation of uplifting the community. We facilitated 958 BOCWA registrations, 165 AADHAR card enrolments and 31 PAN card enrolments.

We conducted First Aid, Fire Safety and Disaster Management, Prevention against Sexual Harassment of Women at workplace (POSH) and Protection of children from Sexual Offences (POCSO) trainings with all our staff to sensitise them .

Every year we are surprised to look at how passionately our teachers, field staff and administrative staff work towards improving the lives of underprivileged children; and this year was no different. Thanks to our entire staff for seamlessly executing all the activities.

The unflinching guidance and support of our Board members and Advisory Panel give us the boost of confidence to execute the programmes tenaciously.

We will never be able to put in words how grateful we are for the support of organisations, individuals, builders, donors and volunteers.

The year 2022-2023 was filled with hope, passion, love and warmth. We start the New Year with a determination to expand our programmes to reach more children from underprivileged communities and work towards the holistic development of children.

Sincerely,
Frahinsa Rodrigues
Chief Executive

About MMC

Who We Are

At Mumbai Mobile Creches, we believe that every child has a fundamental right to education, adequate healthcare and safety. So, we run child-friendly centres for children living on construction sites and in other underprivileged communities. These centres not only keep children out of harm's way but also address their educational and health needs so that they are able to enjoy their childhood in a setting that is safe and supportive.

Our Vision

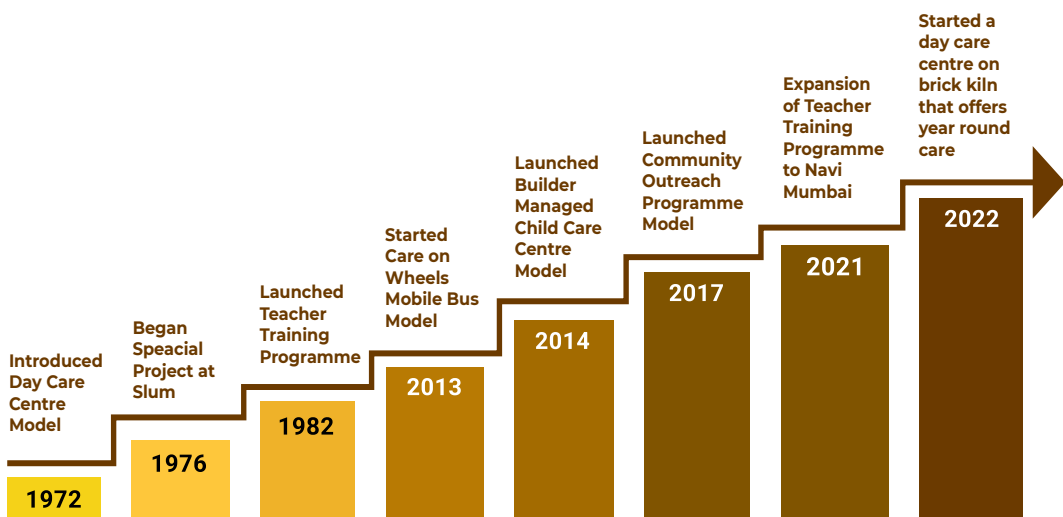
A nurturing and happy childhood for all children.

Our Mission

To promote child-friendly construction sites, where every child living on a construction site is safe, healthy, educated and able to enjoy their childhood.

Our History

In 1969, Meera Mahadevan picked up and soothed a wailing infant on a construction site in Delhi. Mobile Creches was born from that spontaneous act. The organisation branched out to Mumbai in 1972 and MMC was registered as an independent entity in 2006. It is the only organisation in Mumbai which has consistently worked with the children of construction workers as its primary focus and is one of the few organisations working with children under the age of six. We have developed a comprehensive programme for migrant children which can be replicated anywhere.



Our Approach

- Create safe spaces for children living amidst hazardous conditions such as construction sites
- Support the cognitive, emotional and physical development of very young children and build a strong foundation for their enrolment and retention in school
- Free older children from the burden of childcare and help them do well in school
- Enable parents, especially mothers, to work while their children are in our care
- Provide guidance and support to parents on education, health, nutrition and other issues
- Enhance the capacities of communities and professionals to provide comprehensive child care services
- Equip communities and professionals with specialised knowledge on childcare and parenting through short-term, need-based training
- Contribute to developing a cadre of qualified child care providers by running a rigorous training programme
- Network with Government and civil society organisations to protect the rights of migrant construction workers and to facilitate their access to government services and entitlements
- Educate builders on the importance of child-friendly construction sites

Geographical Coverage

Districts

MMC's operations span five districts of Maharashtra – Palghar, Raigad, Thane, Mumbai City and Mumbai Suburban.

Municipal Corporations

MMC is present in eight Municipal Corporation areas in and around Mumbai.

Municipal Corporation of Greater Mumbai
Vasai-Virar City Municipal Corporation
Navi Mumbai Municipal Corporation
Mira Bhayandar Municipal Corporation

Thane Municipal Corporation
Kalyan Dombivli Municipal Corporation
Panvel Municipal Corporation
Uran Municipal Council

OUR REACH

Day Care Centres (DCC) on Construction Sites



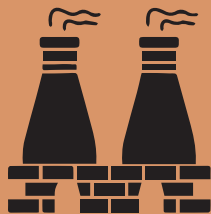
19 Day Care Centre
Operated on
Construction Sites

2539 children
reached

On an average, **930**
children attended
DCC every month

Day Care Centres are at the core of MMC's operations. They typically have three sections – a crèche for children below three years, a preschool for children between three to six and an afterschool programme for children between six and fourteen. We teach them language and cognitive skills and provide supplementary nutrition throughout the day. The children have regular medical checkups and are immunised.

Special Projects at Slums and Brick Kilns



7 special projects
operated

522 children reached

On an average, **231**
children attended
every month

MMC also reaches children living in disadvantaged communities in slums and brick kilns. We run half-day programmes in two slums. One serves children from birth to six and other between three and six. Three brick kiln centres operate seasonally and are shut during the monsoons. Two brick kiln centres operate throughout the year.

Care on Wheels – Mobile Bus Programme



8 sites for Education
Programmes

211 children reached

On an average, **130**
children attended
every month

The Mobile Bus programme operates half day sessions twice a week at 8 sites. It runs education, nutrition and health care interventions. This programme, now in its tenth year, is for children on smaller construction sites where it is not feasible to set up day care centres because there are very few children.

Child Care Centres (CCC) managed by Builders



5 Child Care Centres

382 children reached
On an average, **120**
children attended
every month

These centres were funded and fully managed by our builder partners. We encourage builders to take responsibility for the wellbeing of children living on their construction sites.

Community Outreach Programme (CORP) Model

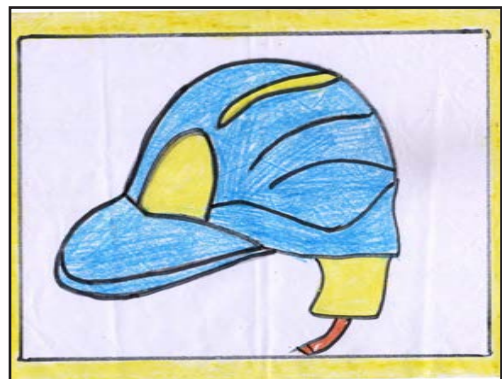
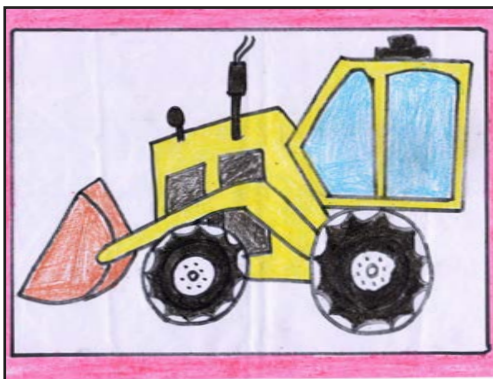


4 sites

373 children reached

On an average, **74**
children attended
every month

On construction sites and slums, where lack of space or other circumstances prevent us from setting up day care centres, we operate our Community Outreach Programme (CORP). An experienced team of field staff members run this programme twice a week on these sites. Several key elements from our standardised day care programmes are brought into this model.



Feedback from stakeholders

“MMC teachers helped me in continuing my studies. MMC inspired me to pursue my heart’s aspirations and dream big. The continued support that I receive from MMC makes me feel confident even now to seek advice from MMC.”

- Sakshi Bele (20 years old Alumnus)

"We had a very enriching experience with the Mobile Bus run by MMC that caters to our Rosa Manhattan construction site's children. Teachers at Mobile Bus are extremely committed to the welfare of our children, and this is evident in the manner in which they care for them. Our children receive nutritious snacks, education, and health facilities. Furthermore, regular health camps are also organized for ear, eye, and dental care. I have found the staff members to be very cooperative."

- Mr. Laxman Suryabhan Shinde - Sr. Project Engineer HSE and Mr. Shadab Ansari - Project Manager, Tata projects Ltd. at Rosa Manhattan, Thane

Thane Zillah Parishad School, Khoni

सर्व शिक्षा अभियान

सारे शिक्ष्या, पुढे जाऊया

जि. प. केंद्र शाळा खोर्णी
ता. कल्याण, जि. ठाणे

फा. क्र. वि. ३८
२७२१०५४८०१

जिल्हा परिषद केंद्र शाळा- खोर्णी, ता. कल्याण, जि. ठाणे

शाळा स्थापना - १९५२

यु. डायस क्र- २०१२१०५४८०१

जा. क्र.

दिनांक - ०८/०९/२०२३

प्रति

मा. सेक्रेटरी

मुंबई मोबाईल क्लेशज, कुलाबा

विषय:- आपल्या संस्थेमार्फत बी. जी. शिर्के गुपच्या बांधकाम सार्वत्रिक मुलांच्या शैक्षणिक प्रगतीसाठी राखवण्या जाणार्थ नाविन्यपूर्ण शैक्षणिक उपक्रमांबाबत.

महोदय,

वरील विषयान्वये आपल्या संस्थेमार्फत खोर्णी गावातील बी. जी. शिर्के उद्योग समूहाच्या म्हाडा बांधकाम सार्वत्रिक बांधकाम करणाऱ्या गरीब मजुरांच्या मुलांसाठी अभ्याससर्वां घालवले जातात. लहानमोठी ५५ मुले/मूली नियमितपणे उपस्थित राहून शैक्षणिक उपक्रम आणि अभ्यासाचा लाभ घेतात. सदर मुले बहुमात्रिक बांधकाम कामगारांची आहेत. तेथील स्वयंसेविका श्रीम. नीलिमा आनंद जिचेदी विद्यार्थ्यांना मनापासून अध्यापन आणि मार्गदर्शन करत असल्याचे वेळोवेळी भेट दिली असता आढळले. सदर मुलांपैकी ८ ते १० मुले बघानुसार आमच्या जिल्हा परिषद शाळेत दाखल केली आहेत. कुमारी अंकिता राम ही विद्यार्थिनी केंद्रस्थानी वक्तृत्व स्पर्धेत सहभागी झाली होती तसेच शिष्यवृत्ती परीक्षेत वासली होती.

शाळेमध्ये २१ नोव्हेंबर २०२२ रोजी पुस्तक आठवडा (BOOK WEEK PROGRAMME) राखवला होता. २ दिवस प्रत्येकी १ तास श्रीम. नीलिमा आनंद जिचेदी यांनी मुलांचे पुस्तक वाचन आमच्या शाळेत घेतले. १२ जानेवारी २०२३ रोजी शाळेत PUPPET SHOW च्या माध्यमातून मुलांचे उद्बोधन केले. अतिशय सुंदर सादरीकरण करून विद्यार्थ्यांनी सर्वांची मने जिंकून घेतली. १० मार्च या दिवशी विद्यार्थ्यांनी चांगल्या प्रकारे लेडीम कवायट सादर केले. त्यासाठी लागणारे लेडीम आमच्या शाळेमध्ये उपलब्ध होते.

बांधकाम कामगारांच्या मुलांसाठी अतिशय सन्मुख उपक्रम राखत असल्याबद्दल आपल्या संस्थेचे अभिनंदन. तेथील स्वयंसेविका श्रीम. नीलिमा आनंद जिचेदी यांचे विशेष कौतुक.

आपल्या संस्थेची उत्तरोत्तर भरभराट होवो ह्या मदिच्छा.

कळावे,

आपल्या मुलांसाठी,

जिल्हा परिषद केंद्रशाळा, खोर्णी.
ता. कल्याण, जि. ठाणे

Our Children

Children Reached

This past year MMC reached 4027 children through 19 Day Care Centres, seven special projects sites, five builder-managed Child Care Centres, Community Outreach models at five sites, and educational activities through Care on Wheels – Mobile Bus at eight sites. We served an average of 1485 children through the year.

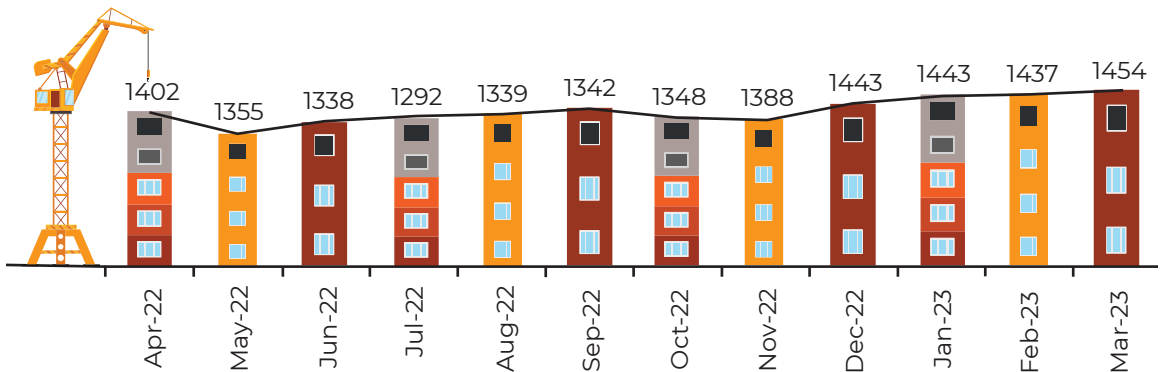


Figure 1: Monthwise average number of children served by MMC in 2022-2023

Age Distribution

In the past year, 56 percent of the children we catered to were below the age of six. On construction sites, such young children are very vulnerable--their parents are at work, they cannot yet attend school, and they are usually left in the care of older siblings. MMC is one of the very few organisations which focus on the needs of the very young child. Our early intervention approach not only relieves older children of the burden of childcare, but also lays a strong foundation for healthy development.

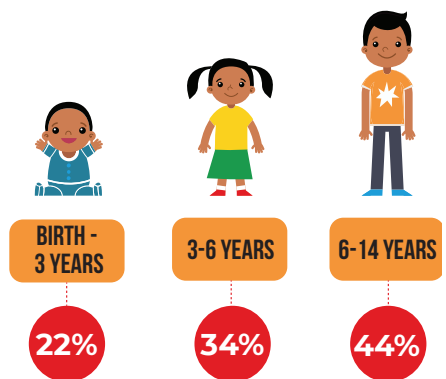


Figure 2: Age distribution of children

Gender Distribution

Overall, the boys (52%) slightly outnumbered girls (48%) at our centres this past year. However, amongst the Balwadi children aged 3–6 years the girl's percentage was higher than that of the boys.

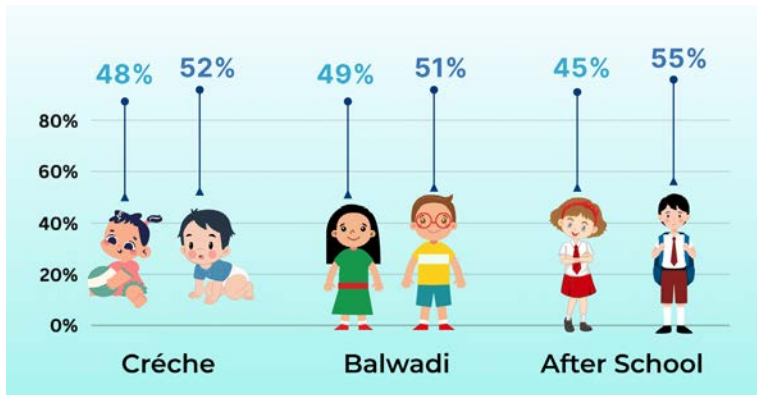


Figure 3: Gender distribution of our children

Since the families of construction workers keep moving from site to site, their children seldom stay at one centre for very long. Last year, 77 percent of our children attended our centres for less than six months. It is therefore very difficult to quantitatively measure the impact of our programmes. We do our best to teach parents how best to address their children's needs even when they are not staying at one of our construction sites.

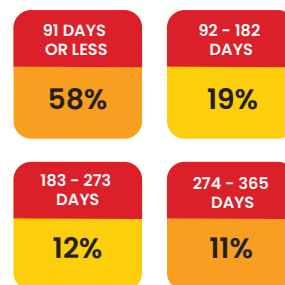


Figure 4: Length of stay

Migration

Each year, the uncertainty of livelihood in rain-dependent, drought-prone areas pushes millions of rural Indians to migrate to cities in search of work. This past year, children attending our centres came from Delhi and 18 states. Within Maharashtra 48 percent of the migrants came from the drought-prone regions of Marathwada and Vidarbha. States in eastern and northern India such as Uttar Pradesh, Madhya Pradesh, West Bengal, Bihar, Chhattisgarh, Jharkhand, made up more than half the remaining migrants.

69 percent of the children from Maharashtra at our centres were from Marathwada (42 percent) and Vidarbha (27 percent).

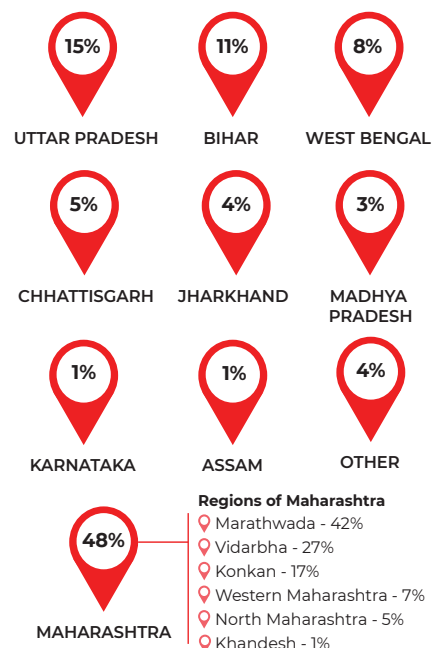


Figure 5: Source state of our children

Linguistic Diversity

Across our centres this year, we served children speaking over 35 languages and dialects, including Marathi, Hindi, Bengali, Bhojpuri, Banjari and many others. MMC works to create an inclusive classroom for all children attending its day care programmes. Our teachers follow a thematic approach and create a text- and language-rich environment to help reduce the burden of learning on children.

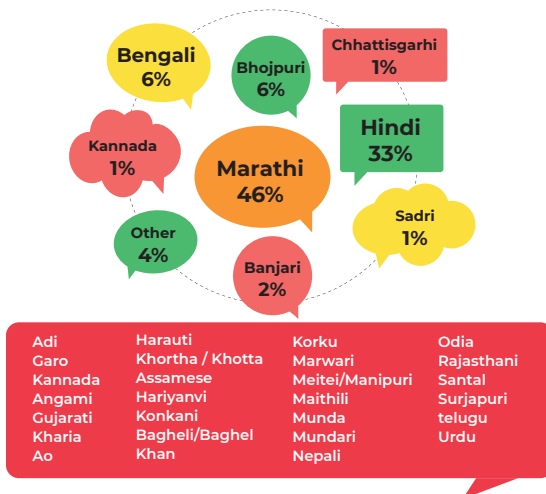


Figure 6: Mother tongue of the children

46 percent of our children spoke Marathi followed by 33 percent who spoke Hindi. The remaining 21 percent spoke Bengali, Bhojpuri, Banjari, Sadri, Chhattisgarhi, Kannada and other languages. Linguistic diversity is one of the most challenging features that our teachers have to overcome, both in terms of conducting educational activities as well as mainstreaming children in schools. We address this challenge through our unique theme-based curriculum and continuous efforts of our teachers.

Profile of Our Community

Age Profile of Parents

The age profile of the 3,061 parents shows that most were in their twenties and early thirties. Figure 7, highlights their age profile. 39 percent of the fathers and 68 percent of the mothers are under 30 years of age and 30 percent and 17 percent are between 31 to 35 years of age respectively. Their children too are very young and very vulnerable.

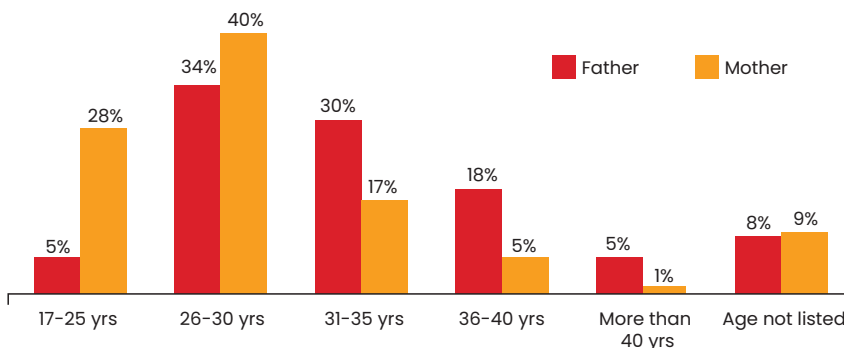


Figure 7 : Age distribution of parents of MMC children.

Educational level of the parents:

Figure 8, shows that the literacy level of our children's parents is very low. Only 8 percent of the mothers had studied up to class 12. Many factors such as early marriage, the belief that women don't need much education, the poor facilities in schools in rural areas, are responsible for this dismal state of affairs. The situation with fathers was not much better, with only 12 percent having studied up to class 12. 63 percent of the fathers and 60 percent of the mothers had studied up to class 10.

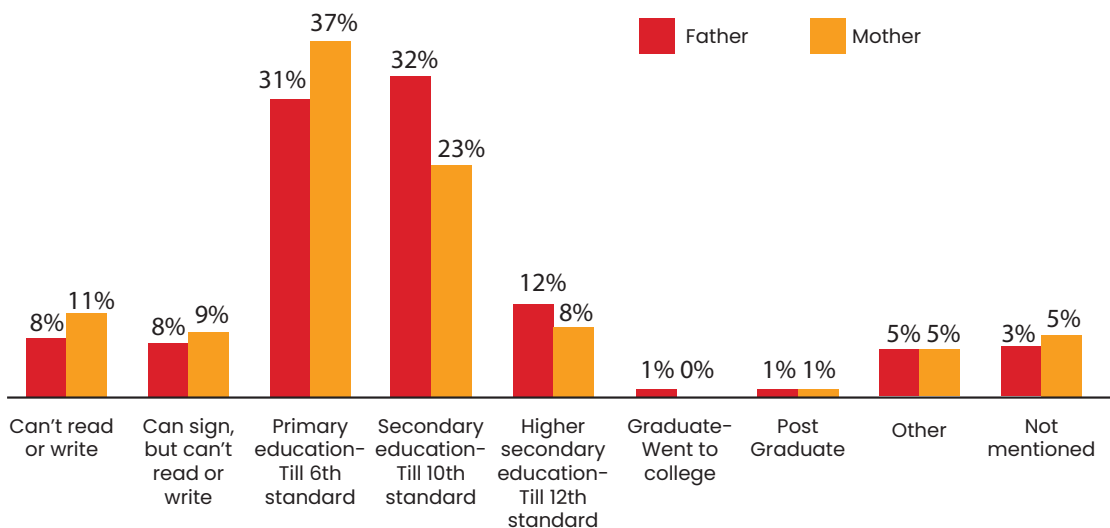
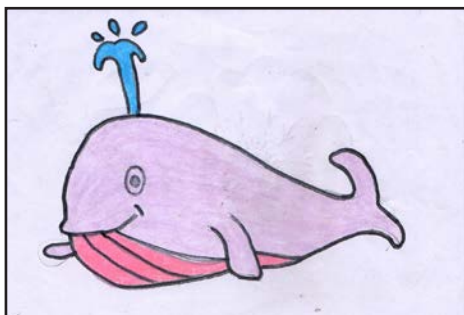


Figure 8: Educational level of parents of children attending MMC centers.



Education Programme

MMC has long recognized the importance of a stimulating educational environment for early childhood learning. Our educational programme encourages the cognitive, emotional, linguistic, physical and social development of children from birth to 14.

From August 2022, as the pandemic eased, MMC's day care centres were fully functional and we restarted our programmes for children between 2 and 14. For children below two we continued our Digital Education Programme that focused on encouraging parents to provide a stimulating learning environment for their children at home. Then from September onwards, we opened our day care centres to children below 2.

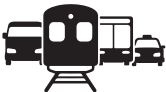











Nearly 60 percent of the children attending our centres are below six, so we place a great deal of emphasis on Early Childhood Care and Education (ECCE). This lays the foundation for sound overall progress, including preparing them for formal schooling.

The ECCE model is based on the five key pillars as given below -

Overall Physical Growth & Development	<ul style="list-style-type: none">• Development of five senses• Coordination and control of gross and fine motor skills• Developing healthy dietary habits and personal hygiene
Language Development	<ul style="list-style-type: none">• Listening Skills• Vocabulary Development• Emergent Literacy Skills• Love for reading
Cognitive Development	<ul style="list-style-type: none">• Conceptual categorisation• Critical thinking• Problem solving• Reasoning
Socio-Emotional Development	<ul style="list-style-type: none">• Empathy, cooperation and pro-social behaviour• Expressing emotions
Creative & Aesthetic Appreciation	<ul style="list-style-type: none">• Facilitating creative and aesthetic appreciation• Developing love for art, music and dance.

Thematic Approach to Learning

Our learning curriculum is developed around monthly themes, called Prakalp. Teachers develop teaching aids, games, songs, and play material for each of these themes. Last year the Prakalp method exposed children to themes, such as

APRIL Transport 	MAY Khel Mahotsav 	JUNE Tree and plants 	JULY Rain and water 
AUGUST Flower, Insects and my country 	SEPTEMBER Animals 	OCTOBER Fruits and Winter 	NOVEMBER Vegetable and book week 
DECEMBER Fish and birds 	JANUARY Me and my body 	FEBRUARY Me and my family 	MARCH Our helpers 

Digital Education Programme- 'Shiksha Ghar Se Ghar Tak'

Shiksha Ghar Se Ghar Tak was an initiative that began in 2020 with the onset of the COVID-19 pandemic. Last year this programme continued till September, where teachers developed and sent educational videos to 603 children through their parents' phones. Parents then imparted the educational programme to their children.

Case Study on Education

Mayra*, a four-year-old belonging to the balwadi section at MMC's Wadala centre, had problems interacting and communicating with other children of her age. Her teacher began involving her in activities through play way methods, such as storytelling, drama, puppets. This boosted her confidence and her communication skills. Her learning abilities also improved. Mayra now interacts and plays with children of her age group, and recites numbers and reads stories with them.

*Name of the child changed to protect her identity.

Open Day

Open Days are sessions dedicated to parent-teacher interactions during which each child's progress is discussed. Teachers inform parents about the academic and artistic achievements of their children and use the opportunity to reiterate to parents the positive and transformative effect of enrolling children in schools. At the same time, teachers also receive feedback from parents about their children and their involvement in their children's development. On average, more than 258 parents attended open days every month between April 2022 and March 2023.

Enrolment of Children

Our goal is to prepare children to join schools and succeed in a mainstream academic setting. We tell parents about school enrolment procedures and the documentation involved and encourage them to enrol their children. Last year we enrolled 180 children in schools and ensured that 607 children already enrolled continued with their education.

Educational Scholarship

One major reason most children living on construction sites are unable to access education is lack of financial resources. This year we continued to provide educational scholarships to both current MMC children and MMC alumni. We provided Rs. 35000/- scholarship to 12 school going children and 15 youths living on construction sites.

Beyond Academics

The children at our centres not only learn academic skills, but also take part in a variety of activities that help them become well-rounded persons.

Library Programme

Books are a child's window to the world, opening doors to places they've never been and ideas they've never heard of. Our children usually lack access to quality reading material because many of them are first-generation learners. Our library programme allows children to develop the joy of reading. Through a carefully crafted library programme we ensure that they are able to read a wide range of age-appropriate books.

Phirti Library

Our Phirti Library programme allows children to take books home once a week. Last year's average monthly figures for our programme were:



No. of Books

No. of Children

Crèche

365

240

Balwadi

553

356

After school

764

538

Toy Library

Our Toy Library programme allows children of all sections to take educational toys home once a week and play with them. Last year's average monthly figures for our programme were:



No. of Toys

No. of Children

Crèche

301

225

Balwadi

443

328

After school

498

454

Our Library Programme also includes the following modules:

Drop Everything & Read: Children are encouraged every day to read any book of their choice either on their own or in small groups.

Read aloud sessions: Every month on average 90 read aloud sessions for the After-School support group and balwadi children were conducted in 2022-2023. Our teacher read aloud books on each month's theme.

Mujhe Padhkar Sunao (Read to Me):

Through this programme parents are encouraged to spend time at the centre reading illustrative books to children in the crèche section.



Newspaper reading: Every morning, children in the After-School Section take turns reading out newspaper headlines to each other.



Field-trips and Outings

17th February 2023



Field-trip to the ZP school science centre.
57 children and 2 teachers were exposed to science experiments

16th February 2023



Field-trip to puppet exhibition at Dr. BMN college, Matunga with
66 children and 4 teachers

8th March 2023



Field-trip to the ZP school science centre.
30 children from brick kilns, 13 from construction sites and 3 teachers were exposed to science experiments.

Annual Children's Camp

Last year's Annual camp was held in December 2022. 382 children from eighteen centres attended the camps held at Yusuf Meherally Centre in Panvel and Gram Mangal in Palghar. This was the first-time children from our brick kiln sites participated in the camps.

Children participated in group games and activities organized by our library team. The highlight of the camp was a magic show. The children also put up a cultural performance with many dances and skits.

Child-to-Child Programme

We strive to provide our children with varied experiences to spark their imagination and broaden their horizons. One such initiative is the Child-to-Child Programme, which gives our children an opportunity to visit some of the best schools in Mumbai while students from these schools get an opportunity to visit MMC centres. This programme not only encourages mutual exchange of skills and information but also promotes understanding and friendship.

The schools we partnered with:

American School of Bombay

Vikas High School

Bolinz High School

Exploring new vistas for learning

Life Skills Education

To equip children with social and emotional learning skills, MMC collaborated with Anubhuti, an organisation that delivers experiential learning programmes using art, drama, games and community work. From January 2023, children from the After-School Support section at three centres got the opportunity

to benefit from this programme. Techniques such as focused group discussions, role play, and mind mapping were demonstrated. These sessions covered topics such as creative and critical thinking, decision making and problem solving, self-awareness, coping with emotions and stress, application of life skills through behaviour and so on. Thirty-one sessions were held and more than 249 children took part in the sessions.



Tablet Based Learning Initiative

A non-internet-dependent Tablet Based Learning programme was an initiative born with the onset of COVID-19 pandemic to help children continue their education even when schools weren't fully operational. The content was based on the Maharashtra State Board's curriculum and included animated video lectures, practice tests with feedback, notes, practical, digital book library with tales, poems, biographies, etc. It was piloted in collaboration with iDream Education at our Virar centre. Last year it was initiated at three more centres -Powai, Shirdhon and Pendhar. 107 After-School Children benefitted.



ABACUS

The ABACUS is a very useful educational tool which fosters early brain development. Introducing an ABACUS to young children not only helps them excel in mathematics, it also boosts their confidence by improving their visualization and stimulating their imagination.

Last year, teachers taught ABACUS level 1 to 350 After-School Section children from 7 centres and level 2 to 85 children at four centres.



Chess Class

In 2022-2023, we conducted the basic chess programme at three centres and reached 72 children in the age group 6 to 14. Trainers from “Gymnasium of Mind” were impressed to see the enthusiasm of our children, especially since many of them were playing for the first time. This will help them develop their skills in problem solving, increase their ability to concentrate, and to speak more clearly. It will also boost their self-confidence and sportsmanship.



Events

Khel Mahotsav

Khel Mahotsav is a festival that our children love. In May 2022, they celebrated a three-week-long Khel Mahotsav. They played both indoor and outdoor games such as tug of war, balancing straw, dog and the bone, lagori etc. These games inculcate both the competitive spirit and team work. Parents and other community members also participated enthusiastically.



Shramdaan

Shramdaan is organized every year in May to cultivate a sense of civic responsibility in children, with the 2022-2023 theme being ‘Chote rog, Gharelu yog’ (Home remedies for minor injuries and illnesses). Children conducted rallies and performed a Lokdoot (street play). They also created dry and wet dust bins, bird houses from waste materials, planted trees, watered plants, and left out water for birds and street animals. These activities helped them understand that every living being on this planet is important and that we should take care of them.

13th Annual Book Week

We celebrated our 13th Annual Book Week in November 2022 with great enthusiasm. The theme was “Kitabon ki Duniya Mai Masti ka Safar” (Fun Filled Journey Through Books). Book Week celebrates the joy of reading and its goal is to kindle children’s interest in reading. 19 resource persons and parents were engaged in reading stories to the children. Guests from various fields also attended. The highlighted books at the week were- “Malli”, “Gola’s House”, Illi’s Shoes”, “Jamalo Chali Hain”. There was an exhibition on the last day, featuring the art created by children. In all, 1309 children received books as gifts.



Puppet Week

We celebrated our Annual Puppet Week in all our centres in January 2023. The theme was ‘Puppet se Karengे Sanskruti ki Pehchaan’ (Recognising culture through puppets). Safety officers and site supervisors along with parents attended the inaugural programme. Puppets created by children made of boxes, bottles, socks, masks, etc. were displayed at a puppet exhibition. They, along with our teachers, staged puppet shows. 207 people from various NGOs and educational institutions attended the exhibition. Our puppet experts also conducted a workshop for participants from various educational institutions.



Arts and Craft Workshops for children

Arts and crafts have always been integral part of MMC’s educational programme as they are some of the most effective means of connecting and communicating with young children. We continued our programme of art and craft session with children at the Children’s Home in Mankhurd. We reached 871 children through 16 sessions. The art and craft sessions conducted by our team provided these children an opportunity to experience joy of creation.

Health & Nutrition

Health

Good health is the foundation of a happy childhood. However, frequent migration can take a toll on children's health. Such children also face multiple barriers in accessing adequate health care and nutrition. MMC maintains a robust health programme, which ensures that our children receive timely preventive and curative care.

Regular health check-ups by doctors ensure identification of illnesses among children. We also organise eye, ear and dental check-ups for children in collaboration with other organizations. We have close links with local health centres to ensure that children receive age-appropriate immunisations. Those who require extensive medical care are referred to the appropriate public health facility.

Many of our children do not get enough nourishment. Anthropometric measurements of children are taken every month to identify malnourished children and address their condition on a priority basis. We then work intensively with the parents of malnourished children to improve their diets.

We continued COVID-19 safety practices of checking temperature and sanitisation of hands. We also encourage children to trim their nails, wash their hands etc.

Last year, we facilitated 2287 vaccinations and recorded 2333 episodes of illness amongst our children.

Health care services facilitated

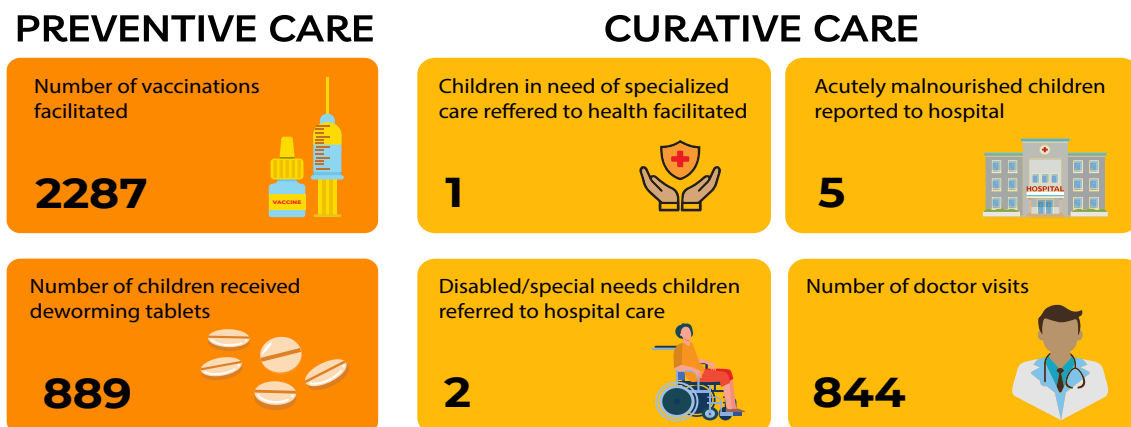


Figure 9: Types of healthcare services facilitated



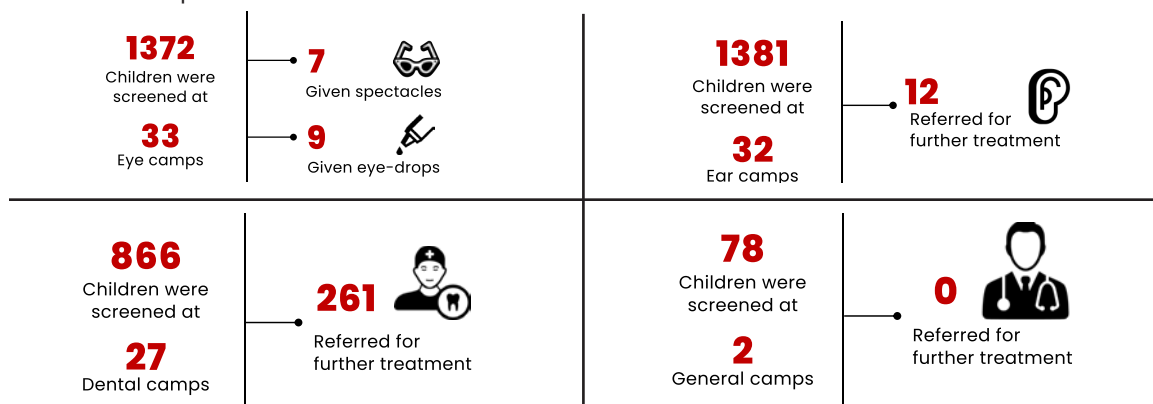
Figure 10: Incidences of illness among children



Figure 11: Vaccinations facilitated

Health Camps

In addition to weekly health check-ups, we periodically organise ear, eye and dental camps for the children.



Dental Camp



Ear Camp

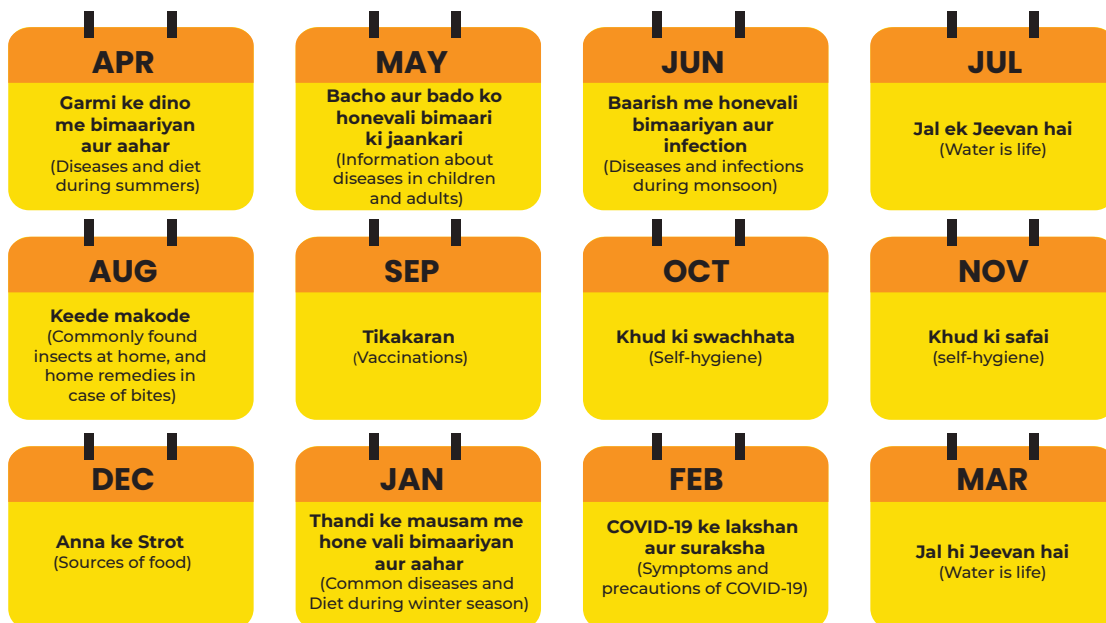


Eye Camp

Ghar Se Ghar Tak Aarogya – Digital Health and Nutrition awareness programme for Parents and Children

The digital health awareness programme for parents of creche children continued. It emphasised proper nutrition for healthy growth. MMC's teachers conducted online awareness sessions twice a week, and also shared various activities for children. We reached on average 195 children and 184 parents every month.

Monthly themes



Health Week

Health week was celebrated at all MMC centres during March 2023. Through this activity we promoted awareness on number of health-related issues, and encouraged people to adopt healthy habits. This year's theme was "Water and Respiratory Diseases". Due to constant exposure to dust, pollutants, harsh and unhygienic environments all those who live on active construction sites are prone to respiratory tract infections such as colds, coughs, fevers and pneumonia.



Awareness was created about the importance of drinking safe water, along with practical activities. This year, many important stake holders including site managers, parents, doctors and staff from Health Posts participated actively during the Health Week. Health kits were distributed to all the children to help them practise good hygiene.

Swasth Bachpan

This past year, to promote healthy dietary routines and hygienic practices for the well-being of the children, “Swasth Bachpan” was organised during the chaipani meetings. During these meeting parents were commended for their children’s improved nutrition, clean and neat appearance, fulfilment of immunisation and other signs of well-being. Parents of 167 children were commended.



Development Assessment of children by using ICMR tool (2022-23)

The early years of life are crucial for optimal lifelong growth and development of children’s motor, language, cognitive and socio-emotional skills. Failure to meet developmental milestones during early years can permanently affect a child’s development and cognition. Developmental milestones are key indicators of a child’s growth. Early identification and intervention can improve the developmental outcomes.

Last year we screened 744 children aged 6 and below for developmental delays using the Psychosocial Developmental Screening Test developed by the Indian Council of Medical Research (ICMR).

Figure 12 indicates that 77 percent of the children had attained age appropriate developmental norms (50th percentile or above) whereas 23 percent were identified with potential developmental delays (below 50th percentile). Of all the children assessed 15 percent were ‘at risk’ (95th - 99th percentile) and needed immediate intervention.

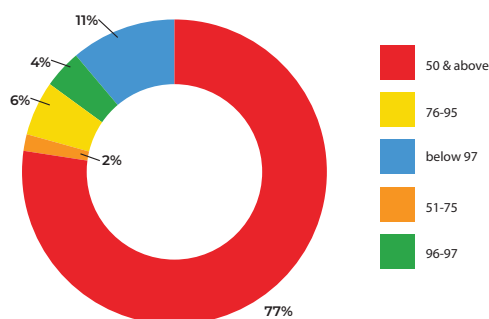


Figure 12: Developmental status of children (N=744)

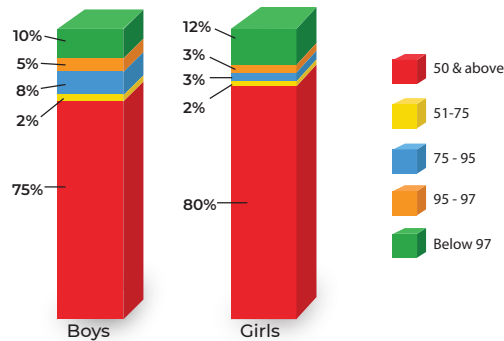


Figure 13: Developmental age of children by gender

We found that the attainment of developmental milestones among girls was higher than among boys. However, approximately 11 percent of both boys and girls fell in the below 97th percentile perhaps because of limited exposure to stimulation activities and other environmental factors.

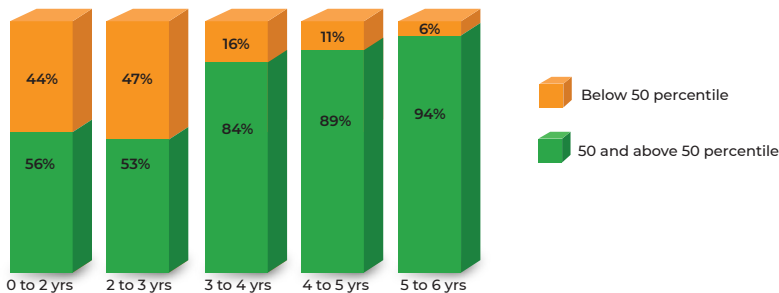


Figure 14: Developmental status of children by chronological age (N=744)

Analysis of age disaggregated data indicated that a large number of children with developmental delays are under three, with the majority between two and three (Figure 14).

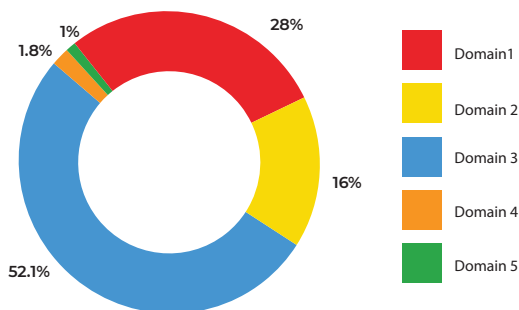


Figure 15: Distribution of children by number of delayed developmental domains (N=169)

A closer look at the children (n=169) at the risk of developmental delays indicated that 55 percent of them possibly had a global developmental delay – in 3 or more developmental areas (Figure 15).

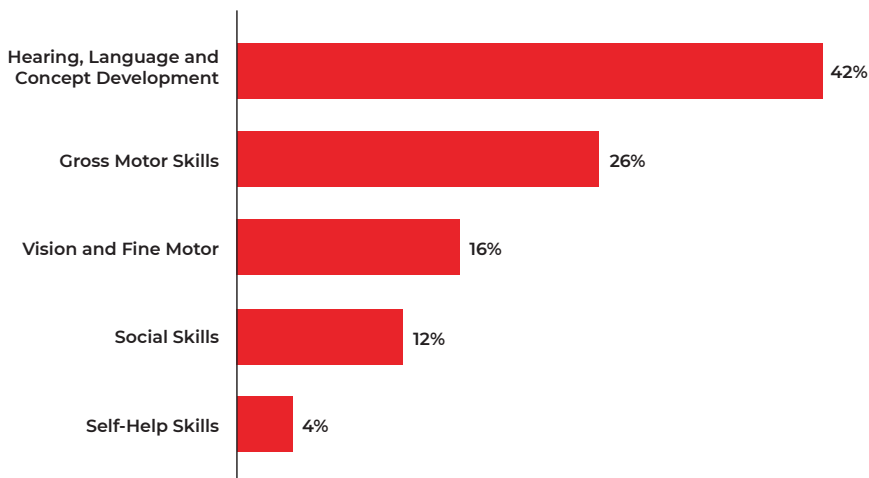


Figure 16: Distribution of children by areas in which delays have been identified (N=169)

Delays were most common in the domains of hearing, language and concept development with 42 percent children, followed by 26 percent children in vision and fine motor domains (Figure 16).

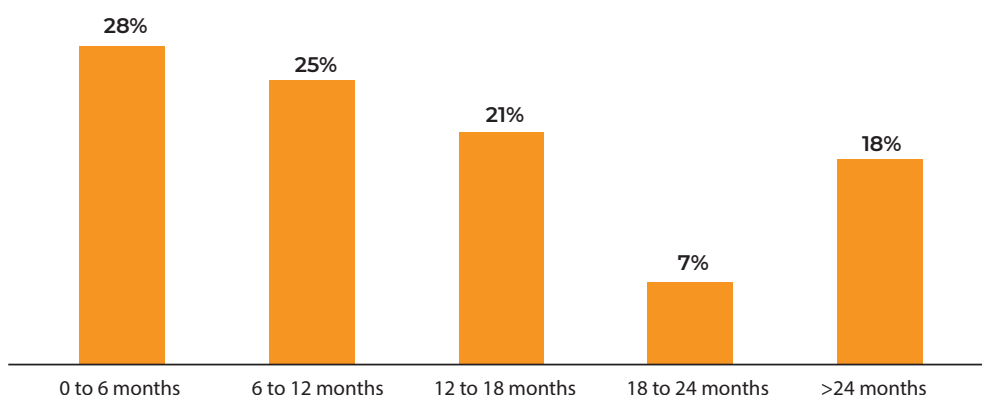


Figure 17: Distribution of children identified with possibilities of delay by duration of stay (N=169)

We found that 28 percent of the children with possible development delays had attended MMC's day care programme for less than six months. The likelihood of developmental delays seemed to drastically decline with increased exposure to MMC programmes. Plausible reasons for this could be the stimulating care children received in our comprehensive ECCE programme that caters to health, nutrition and education needs as well as their natural growth (Figure 17).

Nutrition

The primary goal of MMC's nutrition programme is to supplement the food that children consume at home with a substantive, well balanced diet at our centres.

We partnered with Sakhi Snacks Centre to provide freshly cooked food. Our nutrition programme provides at least 750 calories a day to each child attending our centres.

Foods that were distributed among the children last year



Children eating banana

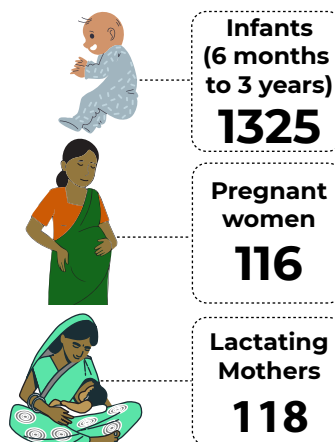


Children eating Khichadi

Liaising with Integrated Child Development Services (ICDS):

In an effort to further strengthen the scope of our nutrition programme and take advantage of government initiatives regarding early childhood care, MMC collaborated with Integrated Child Development Services (ICDS) for implementing their nutritional programme at our centres across Mumbai Metropolitan Region (MMR). Through this partnership, we continued to provide lunch and snacks to children between 3 and 6.

We also gave Take Home Ration (THR) packets to pregnant and lactating woman and children below three.



Case Study

Prince* attends a MMC Day Care Centre's (DCC). His family migrated to Mumbai in search of employment and his father got a job on a construction site at Dharavi and Prince was enrolled with MMC as soon as his parents came to know about our centre. When the teachers recorded his regular anthropometric measurements, they found out that he was malnourished. Because of this he was weak and listless.

After talking to Prince's parents, our teachers found out that Prince was malnourished because his family was very poor. His parents also told our teachers that Prince ate only a couple of spoons of food at home.

An MMC doctor recommended taking Prince to the Nutrition Rehabilitation Centre (NRC) but his parents didn't want to. But they finally agreed after much persuasion by our teachers. Community Health Organiser (CHO) accompanied them. Prince was diagnosed with protein deficiency and anaemia. Our teachers started giving Prince the medicines prescribed by the doctor and continued feeding him MMC's standardised diet in small amounts, in hourly intervals. Slowly, Prince started getting healthier.

He began by walking a step at a time, taking the support of walls. His teacher encouraged him to sit, walk, and engage in other actions that would hasten his recovery. Prince now interacts with kids and takes part in various activities. His nutritional status is normal.

His parents expressed their gratitude to our teachers for their commitment to Prince's recovery. They say that they now don't have to worry about their children as they are in MMC's care.

*Name of the child changed to protect his identity.

Nutritional Status of Children (Birth to 5) based on WHO standards

The Global Nutrition Report 2018 recognises malnutrition as a serious problem. At MMC we regularly track anthropometric measurements - height and weight - to identify children suffering from malnutrition and to address the prevalence of underweight, wasting and stunting as per WHO (World Health Organisation) norms.

A child's first available anthropometric measurement is treated as their base line and their last available measurement is treated as their end line data. Last year anthropometric measures of 855 children below

five years of age was analysed. Additionally, we used secondary data from the National Family Health Survey- 5 and compared underweight, wasting and stunting status of our children with the status of children in Maharashtra and India.

Figure 18, 19 and 20 show improvements in the nutritional status of children on all three parameters of under nutrition - underweight, wasting and stunting while the children attended MMC centres.

Figure 18 depicts that on the parameter of wasting, the percentage of malnourished children was 15 percentage at baseline evaluation. This is low in comparison to Maharashtra (26 percentage) and India (19 percentage) and this further reduced with MMC intervention to 12 percentage.

Figure 19 shows that the number of severe underweight children had reduced from 3 percentage at baseline to 2 percentage at the end line evaluation. In comparison with the rates of underweight children in Maharashtra and All India, MMC children seem to fare better.

Figure 20 shows that on the parameter of stunting there was reduction of 3 percentage in the number of severe stunted children post MMC's intervention. Also, overall prevalence of moderate and severe stunting is 21 percentage which is lower in comparison to the prevalence of Maharashtra (34 percentage) and India (36 percentage).

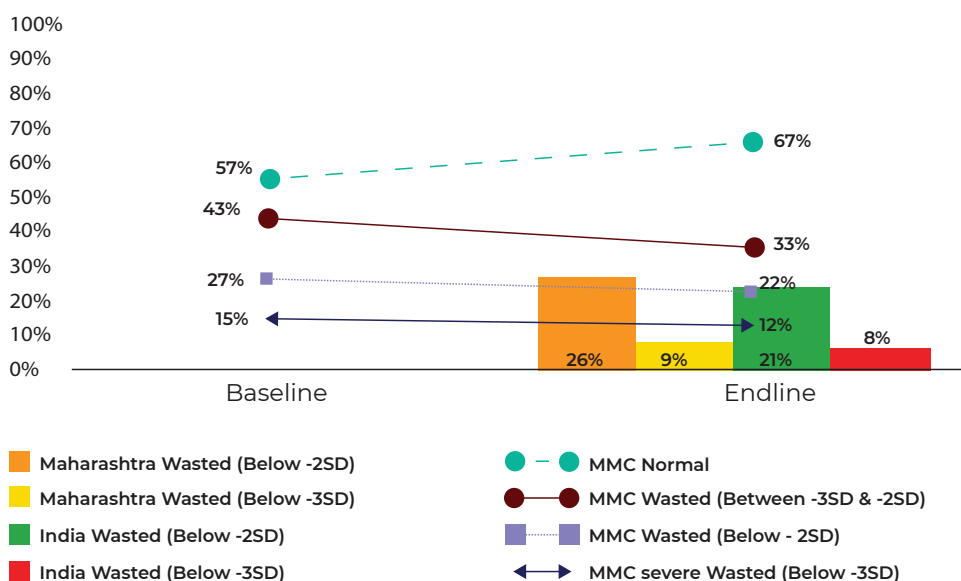


Figure 18: Reduction in wasting at MMC compared to wasting rates in Maharashtra and India

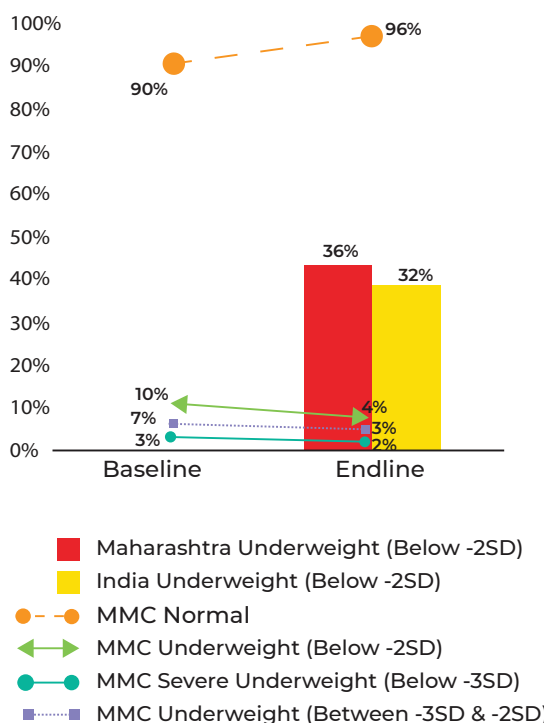
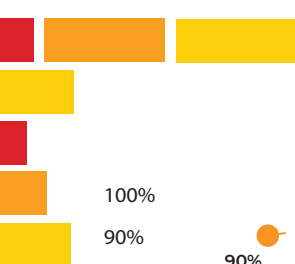


Figure 19: Reduction in underweight at MMC compared to underweight rates in Maharashtra and India

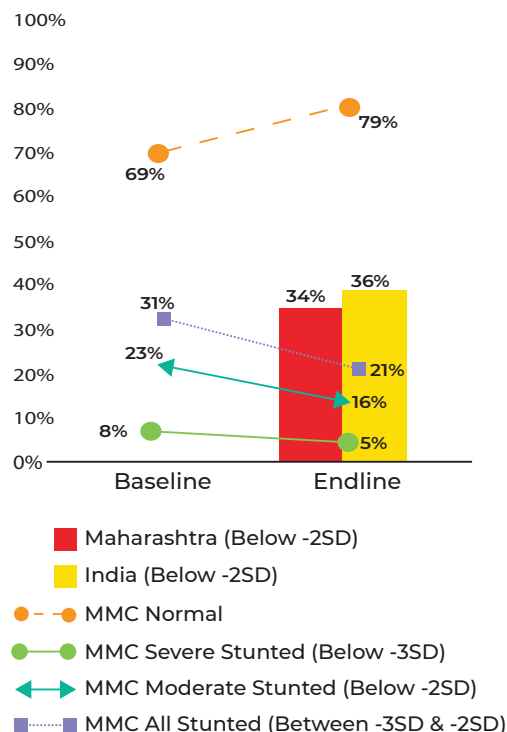


Figure 20: Reduction in stunting at MMC compared to stunting rates in Maharashtra and India

We regularly monitor the health status of children above 5 by measuring their Body Mass Index (BMI). In 2022 - 2023, we gathered height and weight measurements of 740 children in the age group of 5-14. The child's first available measurement was treated as the base line and their last available measurement as the end line data. Their BMI (Body Mass Index) status was calculated as per WHO standards.

Figure 21 shows that the number of children showing normal BMI at baseline was 78 percentage and stood at 87 percentage at the end line. The number of children detected as severely thin at the first evaluation was 6 percentage and dropped to 4 percentage at the end line evaluation. Figure 22 shows that out of the 740 children screened, 52 percentage of the children stayed healthy during their stay with MMC while 21 percentage children improved their health status.

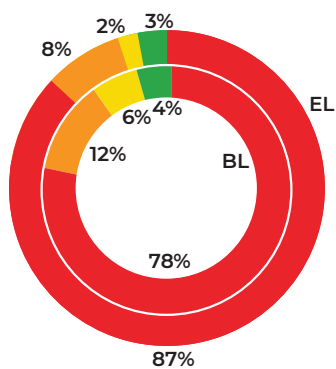


Figure 21: Improvements in BMI

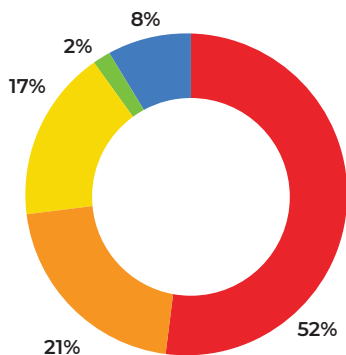
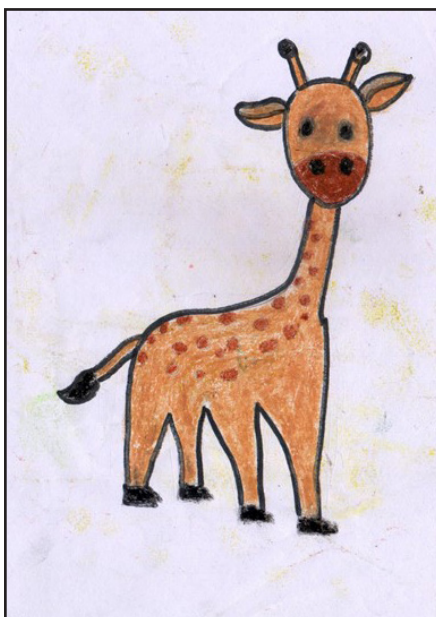


Figure 22: Change in health status in children



Community Outreach

Since we are concerned about the care and safety of children not just inside our centres but in their homes and at construction sites, we have a Community Outreach programme to engage with parents. Our teachers hold Chai Pani meetings (over cup of tea) with parents and stage Lokdoots (Street play) highlighting social issues. This programme is the main way in which we disseminate information and build a deeper connect with the community. Our teachers and community team also hold regular informal discussions with parents on a number of other issues such as entitlements and schemes that benefit migrant workers and their families.

Interactions with the Community

Chai Pani Meetings

These monthly meetings, held over cup of tea, provide community members with a platform for open and informal discussion. We engage parents on issues such as adolescent health, anaemia, school enrolment, malaria, breastfeeding, the importance of identity documents, child abuse, drug addiction, parenting practices, TB etc. Last year, we held 565 Chai Pani meetings and an average of 687 community members participated at each.



APR 22

Adolescent health



JUL 22

Malaria



OCT 22

Child abuse



JAN 23

Menstrual cycle
and Hygiene



MAY 22

Anaemia



AUG 22

Breast feeding



NOV 22

Drug addiction



FEB 23

Malnutrition



JUN 22

School enrolment



SEP 22

Importance of
identity documents



DEC 22

Parenting practices



MAR 23

Tuberculosis

Chai Pani meetings

Lokdoots (Street Plays)

Interactive engagement has always been an effective means of transcending language barriers. We have found that through Lokdoots (street plays) we are able to capture our audience's imagination and impart important messages in engaging and thought-provoking ways. This year, we organised 37 Lokdoots at our sites, and reached 3106 community members. The themes included the importance of saving, safety at work, sanitation and hygiene, the harmful impact of addiction, superstition, malaria, etc.



Month	Centres	Month-wise 'Lokdoot' topics	People Reached
JUN 22	3	Hygiene and Illness due to contaminated drinking water	257
JUL 22	4	Malaria and Hygiene	347
AUG 22	1	Hygiene	156
SEP 22	4	Hygiene	325
OCT 22	6	Savings, Deaddiction, Hygiene, Importance of school	455
NOV 22	6	Deaddiction	599
DEC 22	1	Superstition	88
JAN 23	5	Hygiene, Savings, Road safety, Bad behaviour with children	366
FEB 23	5	Savings, De-addiction	401
MAR 23	2	De-addiction, Safety	142

Figure 23: Lokdoots

Migration Resource Centre (MRC)

Since 2012-13, Migration Resource Centres has given the families of migrant workers a space where they can get information and/or advice about government schemes, the importance of PAN and Aadhar cards, registering under the Building and Other Construction Workers Act (BOCWA), opening bank accounts and other issues that are relevant to them.

In 2022-23, we operated MRCs at seven of our construction sites.

In addition, we also provided recreation materials for indoor and outdoor games and organized cricket matches for construction workers. MRCs thus served as spaces where construction workers could rest, relax and enjoy their free time.

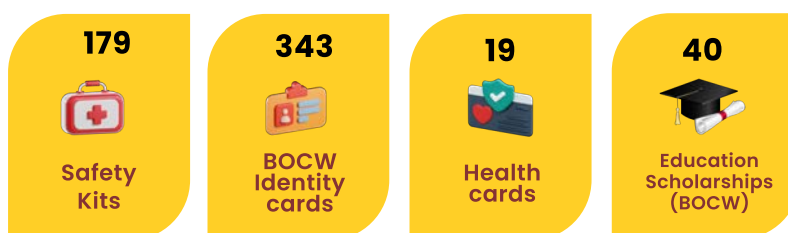


Facilitation of the Resources for the Community

Promoting construction workers' entitlements

This year, we facilitated the registration of 958 workers under BOCW. Over 580 construction workers and their families received safety kits, ID cards, health cards, and educational scholarships. Over 3500 community workers also received daily nutrition support on construction sites.

Entitlements received by the construction workers through BOCW registration



Promoting financial Inclusion

Migrants often arrive in Mumbai with inadequate identification and little background knowledge on finance and welfare programmes, thus unable to tap available resources. This past year, we assisted community members in applying for various identity documents and savings accounts. As a result:

164	Community members obtained Aadhar Cards
31	Members received PAN cards
290	Members opened bank and post office accounts
91	Members obtained E-Shram cards
18	Children obtained Birth certificates

Case Study

Deepak has lived with his mother and wife at a construction site in Taloja for the past eleven years. In 2021, he acquired the BOCW card. He acknowledges that without the assistance of MMC SAKSHAM team he would not have been able to register under BOCW and avail its various benefits.

The team not only assisted him in renewal of the BOCW card, but also helped him obtain a marriage certificate, his wife's Aadhar card and add her name to his ration card. The team also accompanied him frequently to the labour department. As a result, Deepak received Rs. 30,000 under BOCW's marriage scheme.

Deepak expressed his gratitude to the SAKSHAM team for all their help and shared that without awareness sessions on worker's various benefits by MMC, this would not have been possible.

Skill Training

Many construction workers can't afford to upgrade their skills. Therefore, MMC helps them build their skills. In 2022-23, in collaboration with Rustomjee Academy, we facilitated a 12-day skill-training programme for 79 workers in masonry and fitter work.



Health Camps for Community

We regularly organise health camps for construction workers. In 2022-23, in association with Mumbai District Aids Control Society (MDACS), Municipal Corporation of Greater Mumbai (MCGM), Maharashtra Labour Welfare Board (MLW), BOCW Department and Jansahas we facilitated 23 health camps reaching 1786 workers.



Health Camps for Community

Women's Day and Safety week celebration

We celebrated International Women's Day across 20 Day Care Centres and one Child Care Centre. 789 women participated enthusiastically in the games and activities we had organised for them.

This March, in collaboration with builders, we celebrated Safety Week. 967 construction workers participated and were made aware of a number of issues. In addition, safety kits, E- Shram and Health cards were distributed. The workers also enthusiastically participated in street plays and games.



Breastfeeding Week Celebration

Breastfeeding Week is observed in August nationally. In 2022-23, the theme was 'Step Up for Breastfeeding: Educate and Support'. We have constantly advocated good breastfeeding practices. As a part of the celebration, we conducted interactive sessions with over 650 women. We also distributed baby care products to children and seasonal fruits to lactating mothers. In some centres, health post and anganwadi workers were present during the sessions and spoke about the importance of breastfeeding.



Migration Day Celebration

In December 2022, we celebrated Migration Day across our centres in collaboration with builders. At three of the sites more than 95 construction workers took part.

Other Awareness Days

We organised De-addiction awareness sessions at 11 of our construction sites reaching 529 community members.

We organised awareness sessions on “Domestic Violence” in collaboration with Sakhya at two of our construction sites reaching 47 community members.

Sessions on “Menstrual health and Hygiene” were also organised reaching 545 community members.

International Skill Day Celebration

In September, we celebrated International Skill Day at three of our construction sites. We reached 40 community members through sessions on stress management.

Annual Sports Day Celebration

Last December, over 40 children above six from one Hiranandani Estate centre participated in the Annual Sports Day organised by Daffodils Pre School.



Engaging Youth and Workers

Cricket Match

Sports are a very effective medium to keep connecting with young adults and alumni. We organised a cricket tournament at the Pendhar construction site with nine teams. 124 youths and workers from different B.G. Shirke construction sites in Navi Mumbai enthusiastically participated.

On 26th January 2023, we organized another cricket match in collaboration with the builder in Airoli. Ninety-five youth and workers participated.



Training

At MMC, we recognise the value of providing quality Early Childhood Care and Education (ECCE) to all children, the delivery of which requires skilled professionals. Thus, for the last 32 years, we have been engaged in creating a high-quality cadre of trained child care givers through our comprehensive year-long ECCE Diploma Programme, as well as through shorter courses and workshops at the community level. MMC's teacher training programme not only empowers the trainees, it also fulfils the great need for skilled and professional care for the children we serve.

Bal Palika Training Programme

Launched in 1982, MMC's Bal Palika Training Programme (BPT) is a year-long teacher training course specially designed to equip trainees to cater to the needs of young children. Our BPT programme at Wadala and Manasarovar is affiliated to Shreemati Nathibai Damodar Thackersey Women's (SNDT) University. Over the past few years, MMC has increasingly focused on involving women who live on construction sites in our training initiatives so that they could have another way to earn a living. The course integrates theoretical learning with hands-on practical experience at our day care centres. The ECCE concepts are taught in five segments – Growth & Development, Curriculum & Methodology, Health & Nutrition, Child Welfare Services, and Pre-school Administration & Management. Apart from theoretical and practical sessions, the programme includes training in Fire Safety, First Aid and Disaster management, and Child Protection.

To enhance our trainees' English language skills, computer literacy and self-confidence we have been conducting daily classes in partnership with English Vani as well as enrolling them in basic computer courses.

 Professional Development	 HOURS	 Education	 NO. OF DAYS
English workshop	64	Theoretical Concept of ECCE	167 Days
Computer Workshop	72	Practical Child Care Skills	96 Days

In 2022-23, 26 women, ten of whom were from the construction worker's community, earned a diploma in ECCE upon completion of their training. Two of the ten were from our construction sites.

Our programme is rooted in practical childcare, using the play way method as well as arts and crafts. It combines theory and field work.

Our trainees also benefitted from a two-day workshop on puppet making, a day-long training in First Aid, and a half-day training on Fire Safety. Four of our certified child care professionals were absorbed in organizations and day care centres run by construction companies.


Names of the agencies which employed our Bal Palika diploma holders:

Young Woman Christian Association (YWCA)

Mumbai Mobile Creches

Bal Palika Training Assessment

A baseline and endline test of the BPT trainees showed that their knowledge and the skills on various aspects of child development had increased significantly.

 Knowledge Domains	Baseline Test	Endline Test
Early childhood care and Education	23	43
Preschool administration and management	12	16
Maximum possible score	29	44

Exposure Visit

As in previous years, our 26 trainees visited the SOS Village, Alibaug, in February, 2023. The aim of SOS is to look after orphans between 6 and 18 years. The trainees interacted with these children and learned how SOS nurtures them.



Teaching Aid Exhibition

Every year, our Bal Palika trainees create cost-effective customized teaching aids for children. In 2022-23 the theme for the two-day exhibition was अजब गजब अनोखा परिवार (Unique, Marvellous Family). During the exhibition, 3D models of



animals and houses were greatly appreciated by more than 170 people from different organization and colleges.

To prepare for the exhibition the trainees visited the Bal Mela organised by students of Dr. Bhanuben Mahendra Nanavati College of Home Science, Matunga.

BPT Alumni Meet

In March 2023, 27 of our alumni connected virtually to share their experiences of the training they'd received and what they'd done after receiving their diplomas. The meeting provided them with a platform to network and to learn from each other. It also highlighted their need for hands-on computer practice, preparing reporting format, dealing with children with special needs, financial guidance etc.

In addition, we organised a session on preschool management and the importance of health and nutrition for children.

Early Childhood Care and Education (ECCE) Workshops

We organised five ECCE workshops for fifty staff members from Prerana Organisation on topics such as storytelling, personality development, health & nutrition, child development and puppet making.

Puppet Workshop

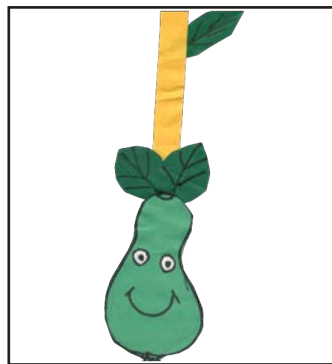
Last year we held three puppet-making workshops for teachers and students from various organisations and educational institutes. More than 120 people took part.



Bal Vikas Sahayog (BVS) Training: Building capacities of the community on ECCE

To build the capacities of women from vulnerable communities for childcare practices we conducted 12-day BVS training sessions in five different communities across Mumbai and Thane. The trainees learnt about child rights, developmental milestones, health and nutritional needs of mothers and children, and first aid in addition to interactive, activity-based teaching learning methods.

On completion of their training, 96 women received certificates.





Our Partners

Government

MMC continues to work with various government departments such as the Municipal Corporations of Greater Mumbai, Navi Mumbai, Thane, the districts of Palghar and Raigad, Health Posts, Municipal Schools, Maharashtra Building and Other Construction Workers' Welfare Board (BOCW) and the Labour Department to ensure that various facilities such as immunisations, school enrolments and various entitlements are availed by the construction workers and their children.

We also continued working with nearby Anganwadi centres of the Integrated Child Development Services (ICDS) for the provision of supplementary nutrition to children between three and six, pregnant and lactating mothers across our 43 centres.

Hospitals

This past year we partnered with the following hospitals to facilitate access to healthcare for our children and the community;

- Excellent Eye Care Centre
- Laxmi Charitable Trust
- Prabhat Charitable Trust
- R. J. Sankara Eye Hospital
- Shravani Institute for Speech & Hearing Impaired
- Tata Memorial Hospital

Non-Profit Organisations

To strengthen existing programmes and to contribute to the greater social good, MMC partners with other likeminded organisations. This past year we partnered with the following non-profit organisations:

- Apni Shala
- Anubhuti Endeavour Pvt. Ltd.
- Bethany Society
- Centre for Social Action Network
- iDream Education
- Inner Wheel Club of Hiranandani Estate, Thane
- Janhit Charitable Trust
- Little Master Chess Academy

- Jan Sahas
- Montfort Care
- QUEST
- Rotary Club of Hiranandani Estate, Thane
- Rubaroo
- Rustomjee Academy for Global Careers
- Sacred NGO
- Sakhya Women's Guidance Cell

Builders and Contractors

Our partner builders in operating Day Care Centres:

- Ajmera Realty & Infra India Ltd.
- B. G. Shirke Construction Technology Pvt. Ltd.
- Gigaplex Hardware & Parks Pvt. Ltd.
- HGP Community Pvt. Ltd.
- Kapstone Constructions Pvt. Ltd. (Rustomjee)
- Roma Builders Pvt. Ltd.

Our partner builders in operating education programmes through the Care on Wheels – Mobile Bus model:

- Bhoomi and Arcade Associates
- Damji Shamji Shah Group
- Nirmal Lifestyle Malls Pvt. Ltd.
- Maverick Realtors
- Rosa Group
- Runwal Developers
- Siddhi Group
- Vijay Patil Chawl

We sincerely thank the following builders/contractors in managing the operations of Child Care Centres on their sites:

- B.G. Shirke Construction Technology Pvt. Ltd.
- Marathon Nexzone Group
- North JP-Infra

We are grateful to Mr. Santosh Bhagat, Mr. Gopinath & Rajesh Bhagat, Mr. Vaibhav Madhavi and Mr. Pradeep Bhagat, Vipul Prajapati, Vitthal Patil & Pandurang Patil, owners of brick kiln sites for providing us space, water and toilet facilities at their sites to operate day care centres in Navi Mumbai, Raigad and Palghar.



Organizational Development and Growth

Building Alliances and Networking

We are committed to representing the voices and needs of migrant children and their communities, as well as providing them with the best possible care. Last year we worked closely with government departments and likeminded organisations on matters concerning migrant children in particular and workers in general. Here are some of them:

- In July 2022, we were invited by Children's Hope India to present our work on our Early Childhood Care and Education (ECCE) model
- In July 2022 we shared our expertise with Prerana to set-up day-care centres for working mothers in slum communities in Turbhe, Navi Mumbai, as well as to explore ECCE training for these women.
- In July 2022, we were invited by the District Child Protection Officer (DCPO), Palghar, UNICEF and SACRED NGO representatives to hold dialogues about new models, collaborations and approaches in addressing the issues of children living near brick kilns.
- In August 2022, we participated in a panel discussion on the webinar titled "National Coalition on the Education Emergency" (NCEE) along with other NGOs organised by Aide et Action International and the Centre for Migration and Inclusive Development (CMID). The session highlighted the lack of access to education for children of migrant workers across India in the context of the closure and reopening of schools.
- In September 2022, we were invited by the Maharashtra Labor Welfare Board to share our innovative, tried and tested day-care model of ensuring child care for the urban poor.
- In December 2022, we were invited by the Minister of Woman & Child Development to share our expertise on our ECCE model for Anganwadi.
- In March 2023, we provided inputs to St. Jude organization in designing and building ECCE-based education frameworks for their children below 6.

Making Migrant Matters

Construction sites are dangerous places to stay in! The children of construction workers have to live amidst iron slabs, cranes, cement trucks and various kinds of debris. They have to inhale air filled with dust and cement. MMC aims to change that through its day-care centres. In our efforts to spread awareness about our work and the challenges we face, we launched a picture story book 'Mumbai Mobile Creches ka Darwaza!' (MMC's Door!). The book, filled with colourful illustrations, features how MMC ka Darwaza is so much more than a door that provides the warmth of a home to children who don't live long enough in one place to call it home. It shows what the lives of construction workers' children would have been without MMC and how their lives turned out thanks to MMC.

Institutional Strengthening initiatives

Strengthening a culture of excellence

Our employees are pivotal to our smooth functioning. We aim to maintain the highest standards of administration, conduct and services. We have reviewed and strengthened our Child Protection Policy, Food Safety and Hygiene Policy, Information Technology Policy, and Photography and Videography Policy to ensure compliances with current rules and regulations.

We, at MMC understand the importance of maintaining clear, timely and transparent administrative records. As a move in this direction, we strengthened our Human Resources Policy by documenting HR and administrative processes.


Research Studies

Productivity Study

Last year in collaboration with Auxillium Empowerment Services Pvt. Ltd., we conducted an "Impact Study of Comprehensive Child Care Services on the Productivity of Migrant Workers on Construction Sites". We compared workers' productivity on sites with and without our day-care facilities.

492 workers, 13 contractors, 15 supervisors, and 14 teachers were interviewed across twelve sites located in Mumbai and Ahmedabad. Six had crèches and six did not.

Many labourers were employed in unskilled jobs such as helpers, loaders, security guards, etc. The sites lacked basic facilities such as clean water and sanitation and the labourers often work for over twelve hours each day without being compensated adequately.



The study highlighted the importance of having Day Care Centres (DCC) on construction sites. When such centres were available, 83 percent of women were able to breastfeed their infants at regular intervals, parents no longer worried about the safety of their children, and the children developed good habits and a liking for education. Productivity improved.

Evaluation Studies

(I) Tablet Based Learning

Last year MMC conducted an evaluation study to assess the benefits of Tablet Based Learning among our children. We measured children's academic performance, their interest in different subjects, and their weekly progress.

The study concluded that the Tablet Based Learning initiative had a positive impact. Mathematics, languages and environmental studies were the most popular subjects. Learning through Tablets improved children's confidence and motivated them to do well academically.

Based on the assessment of this study MMC will be expanding this programme.

(II) Life Skills Education

MMC assessed its Life Skills Education Programme to find out its benefits to older children of migrant construction workers.

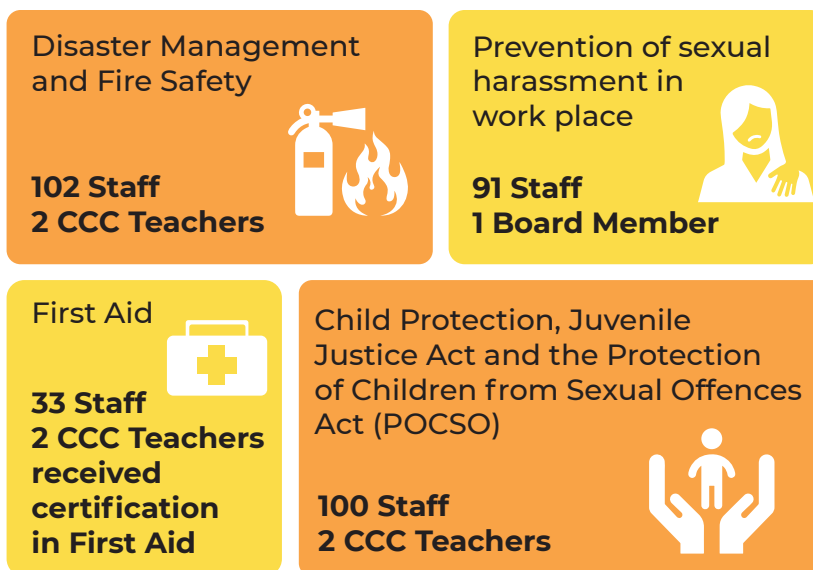
The study showed that the various Life Skills sessions helped children not only cope with cultural diversity but also with their day-to-day challenges such as peer pressure, adapting to a new environment, overcoming language barriers, etc. These sessions improved teamwork, behaviour, decision making and self-development.

MMC, therefore, will be starting Life Skills Education programmes across all its models.

Building capacity of the staff

Our grassroots team makes up the core of our organisation and is a direct link between us and the communities with which we work. Thus we make significant investment in building the capacities of our teachers. This effort is crucial to MMC's past and future success. With capable and knowledgeable staff members at the helm of the organisation, MMC will continue to serve migrant children and help develop child care capacities. Here is a snapshot of training session we conducted this past year;

A. Child Protection and Safety



B. Curriculum and Teaching

MMC's education team and teachers participated in the following workshops organised by the Association for Early Childhood Education and Development (AECED):

- “Strategies to implement the Waldorf Steiner Pedagogy in our classrooms” in January 2023,
- “Planning Learning Corners through the National Education Policy NEP Lens” in February 2023,
- National Curriculum Framework for Foundational Stage 2022: Implications for Early Childhood Educators” in March 2023
- MMC's supervisors also got the opportunity to attend the Workshop on Parenting organised by Muktangan NGO in March 2023
- Parenting Workshops- This year, MMC's creche and balwadi teachers underwent parenting training using the tools developed by the Hincks Dellcrest Center (Canada) adapted by Bala Mandir Research Foundation. The teachers disseminated this information to parents during chai-pani meetings. They discussed the importance of parents being involved in their children's development and helped them improve their psychosocial relationship with their children.

C. Administration and Management

Apart from above, our staff attended the following Supervisory Development Workshop:

Staff trained in	Number of staff
Executives & Field Supervisors	25 Staff member
Field Supervisors	14 Staff members

D. Compliances

Risk Committee Meeting	Risk champion- Programme Staff	Risk Champion- Non Programme Staff
Frequency Quarterly	Frequency Monthly	Frequency Monthly
Number of meetings held 4	Number of meetings held 12	Number of meetings held 12

E. Exposure visits

- In March 2023, 23 MMC staff members visited two Anganwadis in Khalapur adopted by QUEST (Quality Education Support Trust). This organisation has designed various programmes for tribal and rural schools, teachers and teacher educators. To enhance the learning experience of 3- to 6-year-old children, QUEST initiated the Palvee project which is aimed at transforming Anganwadis into vibrant centres of Early Childhood Education. Our teachers studied the ECCE material developed by QUEST.
- We conducted our Annual Staff Social after two years! It was a great way for our staff to visit different NGOs, bond with the team and most importantly, take a much-needed break from their busy schedule. Over 75 staff members attended. We visited the Pratham Arora Centre for Education in Aurangabad. Staff members visited various vocational training units and were also provided with information about each training course. Apart from visiting the centre, staff members also got the opportunity to do some sightseeing in Aurangabad.

Travel

National Travel

Name and Designation	Destination	Purpose	Expenditure
Frahinsa Rodrigues, Chief Executive Sangita More, Assistant Programme Coordinator Shilpa Jambulkar, Programme Coordinator Pradeep Shinde, Programme Coordinator	Nashik	Alliance building meeting with Assistant Labour Commissioner, Maharashtra Labour Welfare Board, Nashik. Visit to Wockhardt Hospital, Nashik to explore partnership opportunities as knowledge partner	Rs. 8,446 borne by MMC
Bal Palika Trainees Prachi Chavan, Education Officer Manjula Shelar, Trainer Anita Gajbhare, Trainer Samina Pirzade, Trainer	Alibaug	Exposure visit to SOS Children's Village	Rs. 8,945 borne by Schindler India Pvt. Ltd. and Azim Premji Foundation

International Travel

No international travel was undertaken during the financial year 2022-2023 by any staff as well as Board of Directors.

Governance

Our Board

Name	Age	Position	Occupation	Board Meetings Attended
Mr. Ashok Mahadevan	74	President	Social Service	4
Mrs. Nalini Chhugani	85	Secretary	Social Service	4
Mr. Raghavan Shastri	70	Director	Corporate Legal Advisor	4
Mrs. Vaishali Deodhar	66	Director	Social Service	1
Ms. Devika Mahadevan	45	Director	Social Service	4
Mrs. Vrishali Pispati	52	Director	Consultant	3
Mrs. Padmini Khare Kaicker	57	Director	Chartered Accountant	1
Ms. Shagoofa Rashid Khan	48	Director	Lawyer	3
Dr. Vrinda Datta	68	Additional Director	Consultant	2

Of the nine Directors mentioned above, two are related: Mr. Ashok Mahadevan is the father of Ms. Devika Mahadevan. The Board Rotation Policy exists and is practiced. No remuneration or sitting fee or reimbursements in any form have been made to any director during 2022-2023. Mrs. Padmini Khare Kaicker stepped down as the Director during the year.

Details of Board Meetings

Sr. No.	Date	Attendance
1	August 06, 2022	6/8
2	September 18, 2022	8/8
3	December 10, 2022	5/8
4	March 25, 2023	7/8
5	September 29, 2022 (AGM)	8/8

Disclosures as per the Sexual Harassment of Women at Workplace (Prevention, Prohibition and Redressal) Act, 2013

MMC has zero tolerance for sexual harassment at the workplace and has adopted a Policy on prevention, prohibition and redressal of sexual harassment at the workplace in line with the provisions of the Sexual Harassment of Women at Workplace (Prevention, Prohibition and Redressal) Act, 2013 for prevention and redressal of complaints. MMC has not received any complaint of sexual harassment during financial year 2022-2023.

Financials

Detailed Income and Expenditure Account

Year Ended 31st March, 2023

Particulars	Amount in Rs.	
	31.03.2023	31.03.2022
<u>Income</u>		
Grant and Donations	5,33,53,414	5,13,66,128
Other Income	64,94,049	57,98,724
Total Income	5,98,47,463	5,71,64,852
<u>Expenses</u>		
Employee Benefits Expense	2,90,94,305	2,51,29,210
Depreciation and Amortization Expense	9,71,022	9,38,462
Other Expenses	2,82,39,427	2,29,64,268
Total Expenses	5,83,04,754	4,90,31,940
Excess of Income over Expenditure before exceptional item, prior period expenses and Tax Expenses	15,42,709	81,32,912
<u>Exceptional Item</u>	-	-
Excess of Income over Expenditure	15,42,709	81,32,912

Abridged Balance Sheet as of 31st March, 2023

Particulars	As at 31st March, 2023	As at 31st March, 2022
<u>FUNDS AND LIABILITIES</u>		
Corpus and Other Funds	8,54,96,621	8,09,78,534
Reserves and Surplus	6,44,03,688	5,92,01,765
Non current Liabilities		
Long-Term Provisions	52,04,667	34,43,735
Current Liabilities		
Other Current Liabilities	1,07,63,569	91,77,527
Short-Term Provisions	14,38,112	29,46,802
Total	16,73,06,657	15,57,48,363
<u>ASSETS</u>		
Non-Current Assets		
Property, Plant and Equipment		
Tangible Assets	77,95,408	83,92,173
Intangible Assets	94,334	1,82,487
Long Term Loans and Advances	22,10,117	15,77,774
Current Assets		
Cash and Cash Equivalents	15,38,55,829	14,09,97,938
Other Current Assets	33,50,969	45,97,991
Total	16,73,06,657	15,57,48,363

Receipts and Payments for the F.Y. 2022-2023

Receipts	Amount (₹)	Payments	Amount (₹)
Opening Balance	1,65,28,843	Fixed Assets Acquired by	4,01,869
Corpus Fund	82,86,000	MMC	
Investments	6,58,60,167	Investments	7,96,55,496
Special Purpose Fund	1,14,420	Special Purpose Fund	2,66,636
Current Liabilities	12,93,961	Current Liabilities	3,04,73,807
Sales Accounts	3,750	Accumulation Fund	7,02,199
Indirect Incomes	1,200	Admin Expenses	14,78,867
APPROVED GRANTS		APPROVED GRANTS	
-Grant (Foreign)	23,89,331	-Grant (Foreign)	13,96,426
-Grant (Indian)	3,86,15,050	-Grant (Indian)	1,95,18,779
Donation Received	1,12,89,051	Field Programme Expenses	34,31,249
Foreign Donation		Foreign Donation Utilised	5,02,898
Received	5,48,444	Foreign Interest Utilised	2,15,055
Fund Raising Income	1,49,870	Fund Raising Expenditure	30,101
Interest on		Other Current Assets	9,12,982
Investment	54,37,432	Closing Balance	
Other Current Assets	40,53,220	Bank Accounts	1,55,67,245
Other Income	7,031	Cash-in-hand	24,160
Total	15,45,77,770	Total	15,45,77,770

Auditors, Legal Advisor and Bankers

Legal Advisor

Bharat G Goyal Advocate
602- Gasper Enclave, A Wing, 6th Floor,
Dr. Ambedkar Road, Pali Naka, above
Ruppee Bank, Bandra West, Mumbai – 400
050.

Statutory Auditor

M/s M A Parikh Shah & Associates LLP
(Formerly known as M A Parikh & Co.)
B-21-25(2nd floor), Paragon centre,
Pandurang Budhkar Marg, Worli, Mumbai
- 400 013.

Internal Auditor

Kalyaniwalla & Mistry LLP, Chartered
Accountants
Esplanade House, 29, Hazarimal Somani
Marg, Fort, Mumbai – 400 001

Practicing Company Secretaries

M/s Robert Pavrey and Associates,
Company Secretaries, 4/8, Santacruz
Mansions, 2nd Floor, Santacruz East,
Mumbai – 400 055.

Bankers

UCO Bank
Madame Cama Road,
Mumbai - 400 039

Canara Bank
Wesely Church Hall Colaba, Mumbai-
400 039.

State Bank of India
Gateway of India Branch, Ramnini, 8
Mandlik Road, Colaba,
Mumbai - 400 001

State Bank of India designated FCRA
Account FCRA Cell, 4th Floor, New
Delhi Main Branch, 11, Sansad Marg,
New Delhi-110001

Standard Chartered Bank
Unit 7/8, ground floor, Lodha Parkside
Retail, Senapati Bapat Marg, Lower
Parel Mumbai - 400 013

Bank of Baroda
Esperanca Building, Shahid Bhagat
Singh Road, Colaba,
Mumbai - 400 039

Kotak Mahindra Bank
Ground and Mezzanine Floor,
Botawala Chambers 2, Sir Pherozshah
Mehta Road, Fort, Mumbai - 400 001

Registrations:

Mumbai Mobile Creches is registered under:

1. Section 25 of the Companies Act, 1956, CIN: U80101MH2006NPL164821
2. Section 12A of the Income Tax Act 1961. Registration number: 40472 with effect from 22.09.2006. Provisional registration No.- AAECM8167HE20214 valid for the period AY 2022-2023 to AY 2026-2027
3. Section 80-G of the Income Tax Act 1961. Registration number: 80G/2251/2007/2008-09 dated 28.02.2008. Provisional approval No. AAECM8167HF20214. Valid for the period AY 2022-23 to AY 2026-27
4. FCRA Registration; Registration number: 083781225, Valid up to 31st March 2028
5. National CSR Hub at the Tata Institute of Social Sciences, Mumbai; Hub code: A/1/17/03/943
6. NGO Darpan NITI Aayog, Government of India; Unique ID: MH/2009/000134
7. CSR 1 Registration, MHA, Government of India; Registration No.: CSR00001732

Salaries & Benefits

Annual Salaries and Benefits

Name	Designation	Rs.
Frahinsa Rodrigues	Chief Executive	11,96,856
Three Highest Paid Full Time Staff		
Pradeep Shinde	Programme Coordinator	8,41,536
Ujvala Hendre	Administration Manager	6,64,029
Aarati Morvekar	Sr. Finance & Compliance Officer	6,40,574
Lowest Paid Full Time Staff		
Laxmi Motul	Teacher	1,94,999
Highest Paid Part Time Staff		
Vrushali Naik	Programme Coordinator	4,68,300
Lowest Paid Part Time Staff		
Pooja Rabse	Teacher	1,36,928

Monthly Salaries and Benefits

Rs	Men	Women	Total
Less than 5,000	0	0	0
5,000-10,000	0	3*	3
10,000-25,000	5	75	80
Above 25,000	2	9	11

* The three employees in the salary range from Rs 5,000-10,000 were part-time employees of Mumbai Mobile Creches

Volunteers

Friends of MMC

We thank all individuals, companies, organisations and educational institutions who have helped change the lives of those MMC serves. We are deeply grateful for their dedication and passion towards MMC's mission to provide a happy, healthy and educated childhood for the children living on construction sites and other marginalized communities.

We highly appreciate their invaluable support and countless hours spent in our office and day care centres contributing towards MMC's effort to expand services to the migrant worker's community and their children. At MMC we are confident with your continued support, the next year will be even better.

"MMC as an organization was supportive and encouraging to help me navigate the field experience through visits and interactions with staff at the day care centers. I learnt various electives such as Labor & Informality, Education & Development Interlinkages, Inclusive Education, Poverty - concepts & measurements. MMC's staff way of prioritizing and understanding the limitations of the parents is commendable. The teachers and program officers shared their long term experiences and the far-reaching relation that has been made with the community overtime. This bond enables the members of the community to reach out to the MMC's staff for any kind of support. My takeaway from this exposure was to be keener on themes of migration and the challenges faced by these children due to language barriers and the close impacts of COVID. Also to learn how long term impacts can be shaped to help children in labor camps to move out of Intergenerational poverty"

-Sharon Thomas, Azim Premji University

"During my stint at MMC, I learned about quality of education, nutritional requirements of young children, and the legal challenges faced by the migrant workers. The teachers and staff were incredibly kind, upbeat and had a profound knowledge of the hardships and daily life of migrant workers. It was a great opportunity to learn from these young children and teachers that helped me grow personally. Spending time with the children at the day-care made me realize the value of MMC's work. It provided space to children to learn, laugh, and to enjoy childhood like any other kids. Most importantly, I learned what it means being less privileged as at home I am a pampered child. But visiting MMC as a volunteer made me realise other side of the world and has made me more humble."

-Vanshika Nijhawan (Mukesh Patel School of Technology & Management Engineering)

Supporters

Thank you!

Many, many thanks to our supporters for their compassion, generosity and dedication to changing the lives of our children. The success of our interventions was made possible by you. Your support helped us achieve multiple milestones in our programme.

- Our heartfelt thanks to the members of our Advisory Panel- Mr. Pirojsha Godrej, Mr. Bharat Goyal, Dr. Nilima Mehta, Ms. Purnima Thacker, Mrs. Malini Thadani and Dr. Shobha Anand Udipi, for their invaluable guidance.
- Many, many thanks to Mrs. Padmini Khare Kaicker for her generous donation towards our corpus.
- We thank Verein Mobile Krippen, Freiburg, Germany for their decades-long support.
- Many thanks to Mr. Gunther Pankoke for his long-standing support.
- Our sincere thanks to Child Vikaas International for their consistent support.
- Many thanks to Mrs. Jigna Sanghvi and members of Ekta Terrace society for their in-kind donations and gifts.
- Many thanks to Mr. Chintan Shah, Headways Preschool, Mrs. Geeta Ved, Mr. Prathamesh Sandip Shinde, HDB Financial Services Ltd., Kotak Mahindra Bank and Ms. Reshma Shah for their in-kind donation of books, stationery and gifts.
- We thank Ms. Esha Keni, Genevieve D'Souza, Mr. Karthik Nair, Ms. Maisha Gada, Mannat More, Ms. Neeilam Manchanda for volunteering with us.
- Many thanks to Book A Smile for donating a television set for our Goregaon centre.
- We are grateful to the employees of Accenture India, Google Connect, Eastman Chemicals Pvt. Ltd., Owens Corning Pvt. Ltd., Reliance Foundation, Tata Chemicals Ltd., Tata Consumer Ltd. for volunteering at our centres
- We sincerely thank Ms. Pragna Maniar, Ms. Shakuntala Bhoir, Ms. Sharda Rahate and Mr. Samar Singh for the capacity building of our staff.
- Many thanks to students of ISDI for conducting origami making sessions with our children at three centres.
- We sincerely thank volunteers from Tata ProEngage for conducting Technical and Creative Writing and Advance Excel Training for executives and Basic Computer Training for our teachers.
- Many thanks to the Principal of Daffodils School for inviting our children to celebrate Annual day with them and for organising a Sports Day.
- Many thanks to Hemlata Headways Preschool and Childcare Centre, Nahar, Chandivali for inviting our children to a Christmas party.
- Special thanks to Archana Jain, Head of the department of Human Development, Sir Vithaldas Thackersey College of Home Science, SNDT Women's University, Juhu and Dr. Parmanand for conducting workshops for our BPT trainees.

- We sincerely thank Inner Wheel Club of Hiranandani Estate, Thane, for conducting pro-bono sessions for our children.
- We are grateful to the American School of Bombay (ASB) for conducting GirlsSpeak for our children and arts sessions for our teachers.
- Many thanks to the Rotary Club and Inner Wheel Club of Hiranandani Estate, Thane, for organising a Sports Day for our Patlipada 2 children.
- Many thanks to MCHI CREDAI for organising a cricket match for our children and youth
- Many thanks to Ms. Chhavi Sachdev for interviewing our teachers and publishing a podcast story on The World.
- Many thanks to Rustomjee Academy for conducting skill training sessions for community workers.
- We thank The Breakfast Revolution and Decimal foundation for providing Kellogg's Chocos to our children.
- We sincerely thank Happy Minds International, Mulund, for their in-kind donation and for organising a fun day for our children at our Mulund site
- Special thanks to the Maharashtra Labour Welfare Board for organising a visit to the Hanging Gardens for our children from the Dharavi centre.
- Many thanks to Panvel Zilla Parishad School for organising exposure visits for our children to view various science models.
- Special thanks to Reliance Foundation for taking children from our four centres to Jio Wonderland.
- Many thanks to SNDDT, Matunga, for inviting our children to their Annual Children's Mela.
- Many thanks to PKF Sridhar & Santhanam LLP, for their advice and support in FCRA related matters.
- Many thanks to Mr. Arpan Thanawala and M/s Thanawala Consultancy Services, for their pro bono support in finance.
- Our sincere gratitude to our empanelled doctors Dr. Jigar Raut, Dr. Jitendra Patil, Dr. Madhav Jogalekar, Dr. Megha Jogalekar, Dr. Mitesh Patil, Dr. Prashant Patil, Dr. Priyadarshani Phatak, Dr. Raghunath Dangi and Dr. Suhas Jagdale for going the extra mile in taking care of our children.
- We are grateful to Ms. Aparna J Khandwala of Yellow Spark for support and guidance on HR.
- Our sincere thanks to the Centre for Advancement of Philanthropy for providing guidance on legal, financial and human resources.

Donations

Mumbai Mobile Creches is grateful to the management of the Indian Hotels Company Limited for graciously providing the premises for our administrative office.

Donations: Individuals (Rs. 5000/- and above)

We are deeply thankful to the following individuals:

- Gunther Pankoke
- Jigna Sanghvi
- Minaxi Haskar
- Nakuleesh Sharma
- Nanda Chavan
- Nikhil Marwaha
- Padmini Khare Kaickar
- Rajeev Ohol
- Ranjana Dalvi
- Sameer Naik
- Sumit Ghosh
- Vijayalakshmi Bhat

Donations and Earmarked Grants: Organisations, Trusts and Foundations

Our sincere thanks to the following organisations:

- American School of Bombay
- Amrit Vasudeva Trust
- Azim Premji Philanthropic Initiatives
- Child Vikaas International
- Give Foundation
- Give Foundation Inc. (Give Foundation US)
- Giving Impetus to Voluntary Effort (Give UK)
- Maniben Nanavati Women's College
- Ramniklal Zaverbhai Shah Trust
- Reliance Foundation
- The Public Charitable Trust
- Verein Mobile Krippen
- V.V. & Smt. K.V. Mariwala Charity Trust
- UK Online Giving Foundation
- United Way of Mumbai
- United World College of South East Asia

Donations and Earmarked Grants: Corporates

We are deeply thankful to the following companies:

- Anamudi Real Estates LLP
- B.G. Shirke Construction Technology Ltd.
- Bajaj Finance Ltd.
- Coface India Credit Management Services Pvt. Ltd.
- Eastman Chemicals India Pvt. Ltd.
- Gigaplex Estate Pvt. Ltd.
- Godrej Seeds and Genetics Ltd.
- Hershey India Pvt. Ltd.
- HGP Community Pvt. Ltd.
- Kaptsons Constructions Pvt. Ltd.
- Kotak Mahindra Investments Ltd.
- Owens-Corning (India) Pvt. Ltd.
- Roma Builders Pvt. Ltd.
- SBI Capital Markets Ltd.
- Schindler India Pvt. Ltd.
- Western Consolidated Pvt. Ltd.
- Western Union Services India Pvt. Ltd.

Donations in kind

We thank all the individuals, companies and organisations who donated essential materials.



Centres Operated

April 2022 to March 2023

MMC Day Care Centres on Construction Sites

- H.C.C., Hiranandani Gardens, Next to Hakone Amusement Park, near Powai Plaza, Central Avenue, Powai, Mumbai - 400 076.
- Patlipada- I, Hiranandani Estate, Off Ghodbunder Road, Patlipada, Thane West - 400 607.
- B. G. Shirke Constructions, Kharghar, Sector 36, near Central Jail, Taloja, Navi Mumbai- 410 208.
- B. G. Shirke Constructions, near Sahayog Hospital, behind MGM School, near Yashwant Nagar, Virar West - 401 303.
- Bhakti Park, Ajmera Realty & Infra India Ltd., Labour Camp, Opposite MHADA Colony, near Imax Theatre, Wadala, Mumbai- 400 037.
- Patlipada - II, Hiranandani Estate, Opposite Roda's Building, Khaadi site Labour Camp, Patlipada, Off Ghodbunder Road, Thane West - 400 607.
- Airoli-Patni, Gigaplex Estate Pvt. Ltd., Plot No. IT-C Industrial Area, Airoli Knowledge Park, MIDC, Navi Mumbai- 400 708.
- B. G. Shirke Constructions, behind B. G. Shirke Office or Old Police Station, near Building No. 10 D, Kannamwar Nagar 2, Vikhroli East, Mumbai- 400 083.
- Building No. 10-A (MIG), Room No. 104, First Floor, Behind Janta Market, Opp. Saibaba Mandir, Kannamwar Nagar-2, Vikhroli East, Mumbai 400 083.
- B. G. Shirke Constructions, Bombay Dyeing Mill, near Bhoiwada Hindu Smashan Bhoomi, Wadala, Mumbai – 400 014.
- B. G. Shirke Constructions, P. M. G. P. Colony, opposite Mahim Nature Park, Dharavi, Mumbai - 400 017.
- Kapstone Constructions Pvt. Ltd. (Rustomjee), Majiwada, Thane West - 400 601.
- B. G. Shirke Constructions, Project Taloja Phase 2, Petali Gaon, Sector 26, Pendhar, Kharghar, Navi Mumbai- 410 208.
- B. G. Shirke Constructions, At & Post Shirdhon, Taluka - Kalyan, District - Thane - 421 204.
- B. G. Shirke Constructions, Prem Nagar, near Venus Joggers Park, Goregaon West, Mumbai – 400 104.
- B. G. Shirke Constructions, Bangur Nagar, opposite Hyper City, Link Road, Goregaon West, Mumbai - 400 104.
- B. G. Shirke Constructions, Project Taloja Phase 2, Sector 29, (Pendhar 2), Kharghar, Navi Mumbai- 410 208.
- B. G. Shirke Constructions, MHADA Tunga Powai Project, Opposite Powai Lake, near Union Bank, Powai, Mumbai- 400 076.
- B. G. Shirke Constructions, Manufacturing Unit, Patalganga, Rasayani, District Raigad – 410 220.
- B. G. Shirke Constructions, Project Taloja Phase 2 (Pendhar 3) 1423, Sector 36, Pendhar Gaon, Kharghar, Navi Mumbai- 410 208.

Special Projects – Day Care Centres

- Room No. 481, Darga road, Khindipada, Bhandup Complex, Mulund west, Mumbai - 400 080.
- Room No. 49, Korba Mithaghar, Ramamata Wadi, Opposite Wadala Police Chowki, Wadala East, Mumbai - 400 037.
- Veetbhatti 1 (Brick kiln site of Bhagat and Madhavi) at Bhingari Gaon, next to Railway Bridge, Taluka Panvel, District Raigad – 410 206.
- Veetbhatti 2 (Brick kiln site of Gopinath and Rajesh Bhagat), opposite Usarli Zilla Parishad School and Panchavati Riverside CHS, Usarli, Panvel, District Raigad – 410 206.
- Santosh Bhagat Veetbhatti, Sector 26, Kamothe, Behind MGM Hospital, near Ganesh Mandir, Navpada Gaon, Navi Mumbai -- 410 206
- Tara Veetbhatti, Tara Village, Mumbai-Goa Highway, Panvel, District - Raigad- 410 207.
- Brick kiln site of Vipul Kantibhai Prajapati, Tilher Village, Taluka -- Vasai, District Palghar - 401 303.

Community Outreach Programme (CORP) Sites

- Dharmacha Pada - Bramhand Road, Kiran Mill Colony, Thane West, Thane- 400 607.
- B. G. Shirke Constructions, Pratiksha Nagar, Sion-Koliwada, Mumbai – 400 022.
- Turfa Ppada – Bramhand Road, near Hiranandani Estate, Thane West, Thane – 400 607.
- Laxmi Nagar, Dadlani Park, Balkum, Thane West, Thane – 400 608.
- Nirmal Ltd, Nirmal Mall, behind Nirmal Mall Multiplex Building, L.B.S. Marg, Opposite. Nirmal Nagar, Mulund West, Mumbai- 400 080.
-

Builder Managed Child Care Centres

- North JP-Infra, Near RNA Viva site, Ghodbunder Village Road, Kashimira, Mira Road East, Mira Bhayandar, Thane- 401 107.
- Marathon Nexzone, Near Palaspe Phata, JNPT Road, Panvel, District Raigad – 410 206
- MHADA transit camp, near Kane Nnagar, Antop Hill, Wadala, Mumbai- 400 031.
- Khoni, B. G. Shirke Constructions, At & Post Khoni, Taluka - Kalyan, District - Thane - 421 204.
- Bhandarli, B.G. Shirke construction, At & Post Bhandarli, Taluka- Ghoteghar, District- Thane -- 421 204.

Care –on - Wheels – Mobile Bus Education Sites

- Nirmal Mall, Behind Nirmal Mall Multiplex Building, L.B.S. Marg, Mulund West, Mumbai- 400 080.
- EIRENE, Runwal Developers, Opposite Runwal Garden City, Balkum Pada, Thane West, Thane-, Maharashtra 400 608
- Bhoomi Acres Phase- 2, Bhoomi Acres, Hiranandani Estate, Thane -- 400 615.
- Rosa Manhattan, Opposite. Flora Building, Hiranandani Estate, Ghodbunder Road, Thane West , Thane-, 400 607
- D.S. Mahavir Kalpavriksha, Ghodbunder Road, behind Hypercity Mall, Kasarvadavali, Thane West, Thane-, Maharashtra 400 615.
- Vijay Patil chawlChawl, Dadlani Rroad, Balkumbh, near Narendra Vasahat, Bhoir ground, Thane West, Thane- 400 608
- O2, Mithaghar, Maverick Realtors, Mulund East, Mumbai- 400 081
- Highland Spring, Opposite Narayana School, Near Balkum Naka, Thane West, Thane- 400 608.

MMC in Media

Proud moment of MMC

Ms. Mumtaz Mulani, our alumni, has successfully completed a Hotel Management Course from 'Pratham Arora Centre for Education (PACE), Aurangabad'. Mumtaz as a child of three years at our Malad day care centre and continued being with us till the age of 14 years. With the support and guidance of MMC teachers and community organisers, she completed her graduation as well as got this opportunity of pursuing this certificate course in Hotel Management. We proudly announce that she has secured a job at one of the five star hotel in Kolhapur.



Learn more about Mumbai Mobile Creches and its work at

Podcast on 'The World' about MMC: <https://rb.gy/adqo4>

MMC in Social Media-



Facebook link-
<https://www.facebook.com/MumbaiMobileCreches>

Facebook
Followers- 4126



Instagram link-
<https://www.instagram.com/mumbaimobilecreches/>

Instagram
Followers- 968



Twitter: 606 Followers
<https://twitter.com/mmcngo>



LinkedIn Followers: 981 Followers
<https://www.linkedin.com/company/2889317/admin/>



Youtube: 748 subscribers
<https://www.youtube.com/user/mumbaimobilecreches>



Mumbai Mobile Creches

1st Floor, Abbas Building, Mereweather Road, Colaba, Mumbai - 400 001

contact@mmcmail.org.in |

www.mumbaimobilecreches.org

Registered under section 25 of the Companies Act 1956

CIN : U80101MH2006NPL164821